

3D hardware

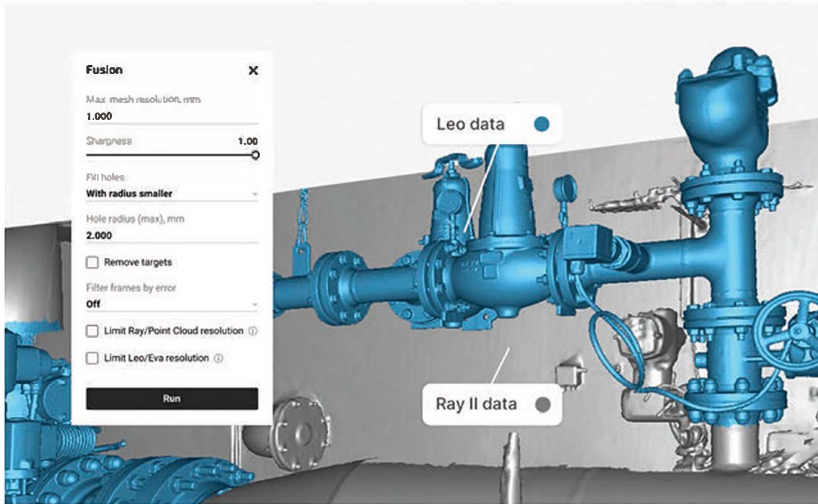
Artec products



Leo	Eva	Spider II	Micro II	Ray II	Point	Metrology Kit
Scanner type						
Wireless	Handheld	Handheld	Desktop	Long-range	Handheld	Photogrammetry
Size of scanning object/area						
M → L	M	S → M	XS → S	L → XL	S → L	L → XL
Accuracy, up to						
0.1 mm	0.1 mm	0.05 mm	0.005 mm	1.9 mm @10m	0.02 mm	0.002 mm
Resolution, up to						
0.2 mm	0.2 mm	0.05 mm	0.04 mm	3/6/12 mm @10m	0.02 mm	—
Target-free technology						
✓	✓	✓	✓	✓	×	×
Color + geometry tracking						
✓	✓	✓	✓	✓	×	×
Scanning software						
Onboard software	Artec Studio	Artec Studio	Artec Studio	Onboard software, Remote App, Artec Studio	Artec Studio	Artec Metrology Kit Plugin for Artec Studio
3D mesh export formats						
OBJ, PLY (with vertex colors), STL, VRML/WRL, ASC, AOP, PTX, E57, XYZRGB, USD (USDA/USDC) / USDZ						
Working distance						
0.35 – 1.2 m	0.4 – 1 m	0.19 – 0.3 m	—	0.5 – 130 m	> 0.3 m	—
Linear field of view H×W @ closest range						
244 × 142 mm	214 × 148 mm	128 × 104 mm	—	—	—	—
Linear field of view H×W @ furthest range						
838 × 488 mm	536 × 371 mm	171 × 152 mm	—	—	700 × 600 mm	—
3D reconstruction rate for real-time fusion						
22 fps	16 fps	30 fps	—	—	120 fps	—

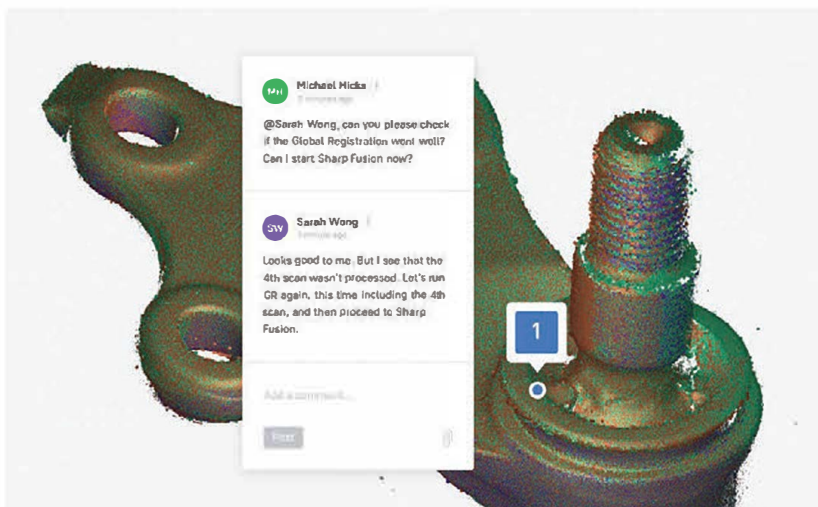
3D software

Artec products



Artec Studio 20

AI-powered 3D scan processing software that saves you time with workflow automation, performs essential quality inspection, reverse engineering, and CAD modeling tasks, and turns photos and videos into professional-grade 3D models.



Artec Cloud

Sync & backup 3D scan projects in a single click to secure your progress. Collaborate in real-time on shared data and access files anywhere online, without having to download them.



Artec Academy

Learn to capture confidently via online courses packed with hands-on tasks and expert training (in-person or virtual). Subscribe to sharpen skills or embark on industry courses for up to five people.



Discover the Artec 3D range in all its glory.
Find your perfect 3D scanning companion here.

www.artec3d.com

Supplied in the UK by
Mark3D UK
T: 0121 661 1151
W: www.mark3d.com/en

