

DISCOVER THE FUTURE OF SOLVENT MONITORING

MAXICHECKCONNECT.COM



 **SAFECHEM**
be responsible

MAXICHECK™
connect

SIMPLER. SMARTER. CONNECTED.

WHY IS SOLVENT MONITORING IMPORTANT?

Regular monitoring of your solvent bath is key to ensuring a reliable and sustainable cleaning process. Keeping your solvent in good condition can:



IMPROVE PROCESS EFFICIENCY

Increase process stability and avoid process disturbances such as machine downtimes



PROTECT YOUR MACHINE

Reduce corrosion risk of your cleaning equipment and protect your machine



EXTEND SOLVENT LIFESPAN

Resulting in fewer bath exchanges and less waste

UNTIL NOW, SOLVENT MONITORING HAS BEEN A MANUAL TASK, SUBJECT TO INCONSISTENCIES AND HUMAN MISTAKES.

What if technology could automate solvent testing, minimize human errors, and digitalize the process for predictive insights and proactive risk management?



TRANSFORM YOUR SOLVENT MONITORING WITH MAXICHECK™ CONNECT



PROPRIETARY SENSOR TECHNOLOGY

MAXICHECK™ Connect is the first solvent testing device powered by proprietary sensor technology, offering you maximum process control and reliability.



DEEPER INSIGHTS

It delivers real-time alerts for critical incidents and data-driven trend analysis, enabling deeper process insights and an optimized cleaning workflow.



AUTONOMOUS TESTING

The standardized, precise and autonomous testing of MAXICHECK™ Connect enables comparable and consistent results. It facilitates much more frequent testing without posing undue burden on operators.



DIGITALLY CONNECTED

As a digitally connected device, it automatically documents and archives testing data.

HOW DOES MAXICHECK™ CONNECT WORK?

1 SAMPLING
Place a solvent sample into MAXICHECK™ Connect

2 AUTOMATED ANALYSIS
Advanced built-in sensor technology autonomously measures acid content, alkalinity and acid acceptance



3 RESULTS & RECOMMENDATION

Instant dashboard insights
See all key solvent parameters

Smart recommendations
Get precise instructions on re-stabilization volume (if needed)

Auto-documentation
All measurement data is securely stored

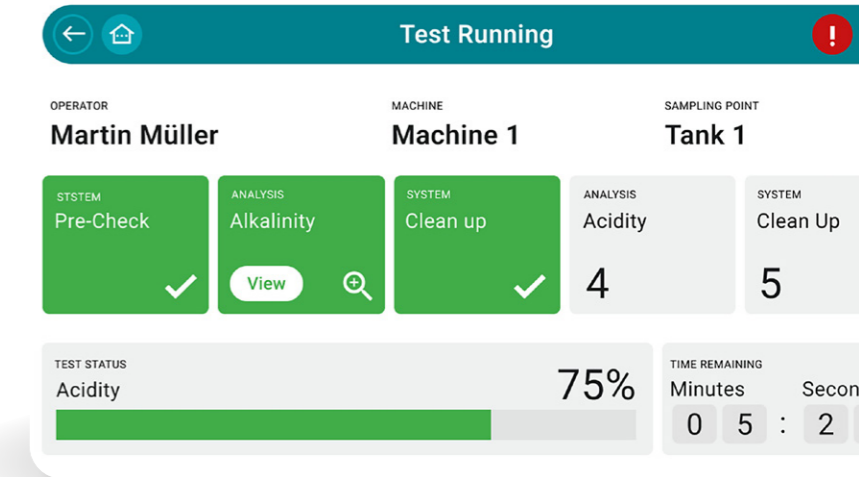
4 REAL-TIME ALERTS
Receive up-to-date information or early warnings on relevant incidents

MAXICHECK™ connect
SIMPLER. SMARTER. CONNECTED.

WHY MAXICHECK™ CONNECT?

SIMPLIFY YOUR BATH MONITORING

- ✓ Quick & easy solvent testing with just a few simple clicks
- ✓ User-friendly interface. No chemical expertise needed for operation
- ✓ Ability to handle multiple machines using the same solvent



Results

20 Results

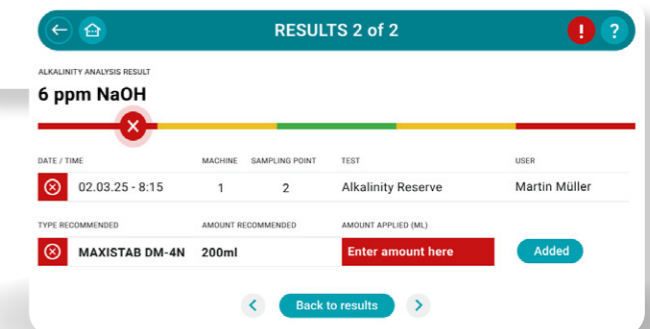
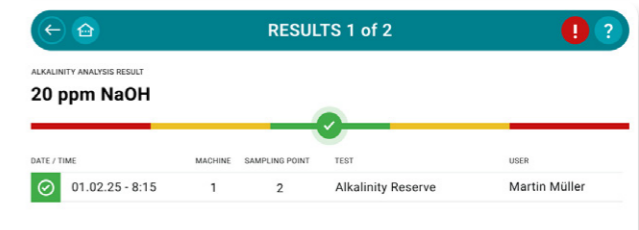
CONDITION	DATE / TIME	MACHINE	SAMPLING POINT	TEST	RESULT	ACTION COMPLETED?
⚠	03.02.25 - 10:15	1	1	Alkalinity Reserve	380 ppm NaOH	✗
⊙	13.01.25 - 14:45	2	2	Acid Acceptance	0,045 % NaOH	
⊙	02.12.24 - 13:21	1	3	Alkalinity Reserve	280 ppm NaOH	
⊙	05.11.24 - 08:15	2	1	Acid Acceptance	0,047 % NaOH	
⚠	15.10.24 - 10:30	1	2	Alkalinity Reserve	10 ppm NaOH	✓
⊙	01.10.24 - 09:20	1	3	Alkalinity Reserve	280 ppm NaOH	

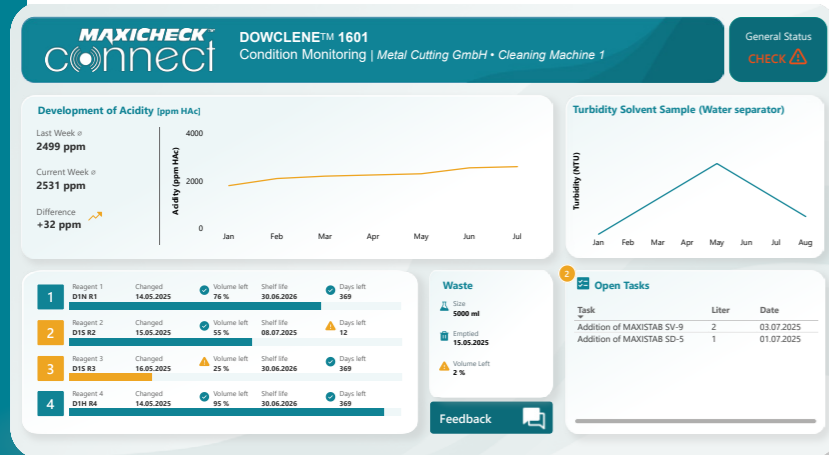
OPTIMIZE YOUR PROCESS CONTROL AND RELIABILITY

- ✓ Automated, precise testing removes human errors and inconsistencies
- ✓ Facilitate more frequent and standardized procedure for consistent, comparable results
- ✓ Automatic calculations on recommended re-stabilization volume

PROTECT YOUR CLEANING MACHINE

- ✓ Reduce corrosion risks with better process control
- ✓ Extend machine lifespan
- ✓ Prevent unexpected machine downtime with early warning systems





MINIMIZE YOUR PROCESS RISK AND DETECT ISSUES EARLY

- ✓ Intelligent bath monitoring with trend analysis detects issues early, preventing larger disruptions and downtime
- ✓ Real-time alerts instantly notify teams of critical events (e.g. exceeded limit values)
- ✓ Greater success control through actionable alerts, guided troubleshooting and tailored recommendations

YOUR DATA. OUR PRIORITY.

To ensure the safe, reliable, and compliant handling of all data captured by MAXICHECK™ Connect, a range of robust data security measures have been implemented, including:

TLS ENCRYPTED COMMUNICATION

All data transmission between the device and our cloud infrastructure is secured via Mutual TLS encryption.

CERTIFICATE-BASED ACCESS CONTROL

Only devices with a valid certificate and Common Name (CN) can send or receive data. Unauthorized devices are automatically denied access.

CUSTOMIZABLE PLATFORM SETTINGS

Security configurations can be restricted at the platform level – covering elements such as Wi-Fi, Bluetooth, and other interfaces to reduce exposure.

ISO 27001-CERTIFIED HOSTING IN GERMANY

All servers are hosted in Germany and operated in compliance with ISO 27001, one of the most rigorous international standards for information security.

FAIL-SAFE ARCHITECTURE

In the unlikely event of system failure, faulty updates, or network disruption, fail-safe protocols ensure that no damage occurs to the device or gateway – preventing unsafe conditions.

PHYSICAL SECURITY

Devices and gateways are protected by lockable enclosures, adding an extra layer of physical safety at your site.

MAXICHECK™ CONNECT AS A SERVICE

MAXICHECK™ Connect is offered as a full service package at a monthly rate. Everything you need for efficient solvent monitoring is already included:

- ✓ **MAXICHECK™ Connect Device**
Easy plug-and-play
- ✓ **Analytical Fluids**
For precise testing
- ✓ **IoT Cloud Connectivity**
Real-time alerts
- ✓ **Weekly Condition Reports**
See issues before they arise
- ✓ **Full Technical Support and Device Maintenance**
Hassle-free operation
- ✓ **No Upfront Investment Required**
All benefits, zero initial spending

STREAMLINE YOUR REPORTING AND AUDITING REQUIREMENTS



Automatic digital documentation saves time and operating expenses for audits



Real time data access and retrievability of past records



Enhanced traceability for batch quality monitoring and faster root-cause analysis of process issues

IMPROVE YOUR SUSTAINABILITY PERFORMANCE



Longer solvent lifespan, fewer exchanges, less waste



Cost savings thanks to optimized resource usage



Less direct handling of chemicals for operators/increased worker safety

NOTE: Features such as real-time alerts and trend analysis require an active connection to the IoT platform. This connection can be established via an integrated SIM card and does not require access to the company network.



TAKE YOUR SOLVENT MONITORING TO THE NEXT LEVEL!

MAXICHECK™ Connect is a pioneering solution that digitalizes your cleaning process in alignment with industry 4.0.

It elevates your solvent monitoring practice, giving you a competitive edge with first class quality management and process maintenance, technical foresight and optimized resource efficiency.



BEST-IN-CLASS QUALITY AND PROCESS SAFETY

For peace of mind



DATA-DRIVEN ANALYTICS AND RECOMMENDATIONS

For strategic insights



OPTIMIZED RESOURCE EFFICIENCY

For peak performance



READY TO EMBRACE THE FUTURE OF SOLVENT MONITORING? CONTACT US TODAY.



WATCH OUR VIDEO



Legal Disclaimer: The information and data included in this document have been carefully reviewed. However, SAFECEM does not warrant that any information and data is complete, accurate or up to date. Furthermore, the information and data included in this document do not constitute product specifications of SAFECEM products. It is solely the Buyer's responsibility to determine whether SAFECEM products are appropriate for Buyer's use. Liability claims against SAFECEM arising from using or not using the information featured in this document are excluded in principle unless there is evidence of willful intent or gross negligence on SAFECEM's part or other cases of compelling liability prescribed by statutory law. The use of trade names, trademark rights, patents or other industrial or intellectual property rights in this document shall not authorize the use of the foregoing names, rights or brands freely, as they may be the protected or registered rights of third parties or SAFECEM even if they are not expressly identified as such. In general, SAFECEM retains the copyright to the entire content of this document. The duplication or use of SAFECEM's product designations, images, graphics and texts is not permitted without SAFECEM's explicit written consent.

™ Trademark of SAFECEM

SAFECEM EUROPE GMBH
Tersteegenstr. 25
40474 Duesseldorf
Germany

Phone: +49 211 4389-300
Email: contact@maxicheckconnect.com
www.maxicheckconnect.com

 **SAFECEM**
be responsible

250501-0525