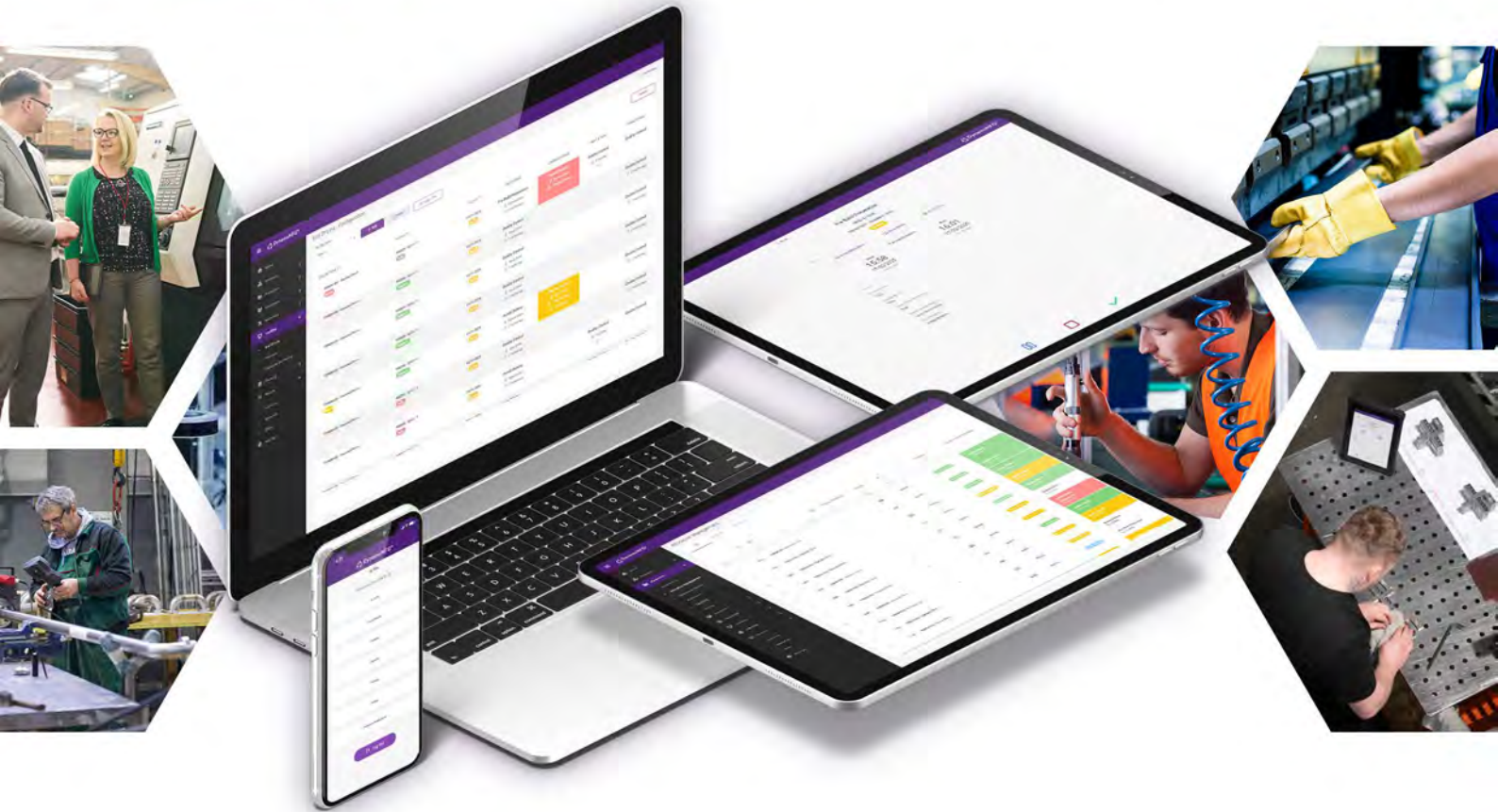




# DynamxMFG®



MES



Suppliers



Customer



Shopfloor



Inventory



Insights



Integration



Planning

## Smart Manufacturing, Real Results

TotalControlPro's DynamxMFG® platform is purpose-built for SME discrete manufacturers to digitise, streamline, and scale operations, connecting activity from the shop floor to the top floor in real time.

Built by manufacturers for manufacturers, DynamxMFG® brings enterprise-level functionality into a modular, accessible, and cloud-based solution that fits the specific needs and budgets of growing businesses.

# DynamxMFG® The Smart Manufacturing ERP for SMEs

We understand that often the process management and data collection systems in use are operated separately and disconnected. Whether using an ERP or Excel, people spend too much time finding out what's happening in order to take action, and often that action takes too long or is too late.

DynamxMFG® is a next-generation manufacturing platform that combines machine learning, and cognitive automation to provide you with the infrastructure you need to compete with the best in a rapidly evolving manufacturing world.

DynamxMFG® is the consequence of working with manufacturers for over 10 years on their needs and pain points.

One client said: "clearly your system has been built by people who understand the pain points in manufacturing, and you've provided some real solutions to painful problems"

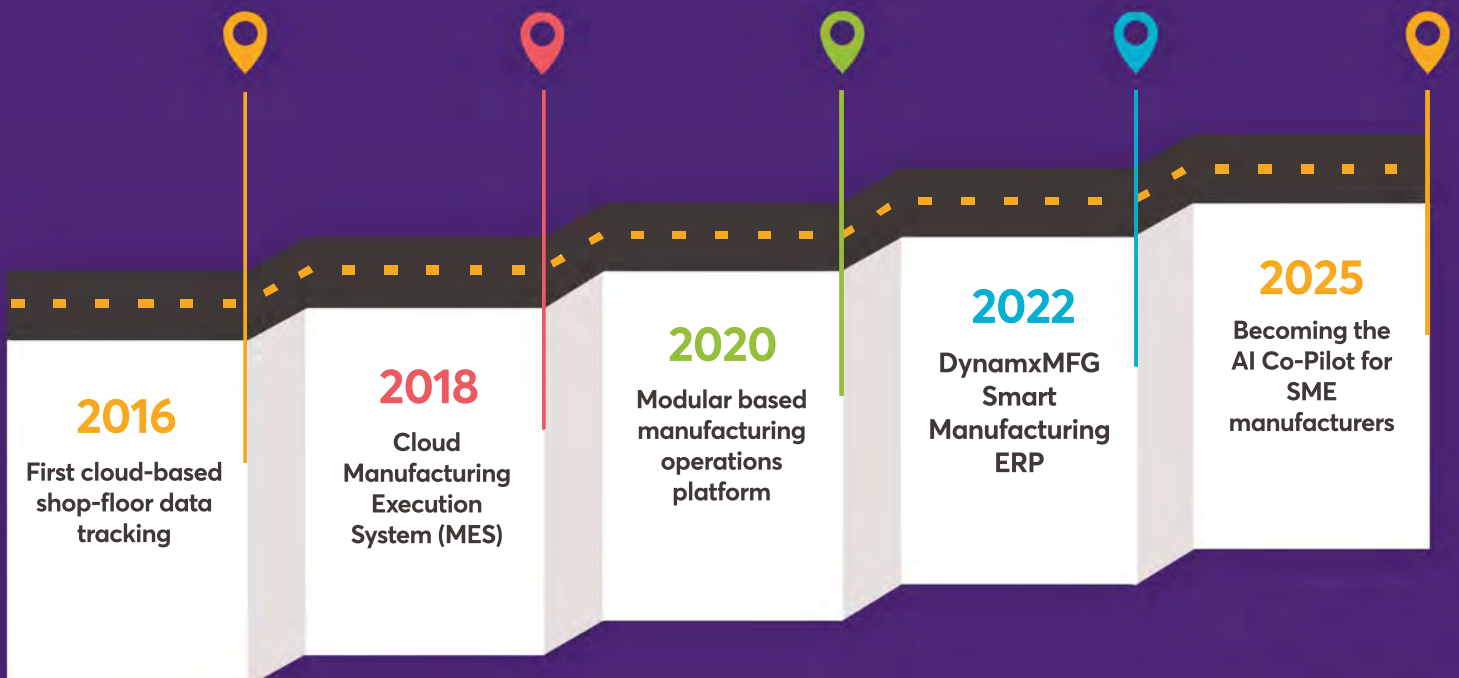
- Production Director, SME Fabricator.

This powerful platform empowers SMEs to track jobs, machines, people, and materials in real-time, transforming raw operational data into clear, actionable insights. With fewer delays, better planning, and more accurate cost control, manufacturers can boost competitiveness in even the most dynamic markets.

With DynamxMFG®, manufacturers gain the tools to improve efficiency, meet growing customer expectations, and build resilient, future-ready operations - all without the burden of legacy systems or high infrastructure costs.

## AI-Ready from the Ground Up

DynamxMFG® doesn't just deliver value today, it's built to evolve with your business. The platform's enriched, synchronised data structure lays the foundation for AI and machine learning integration, enabling predictive insights, process automation, and intelligent recommendations when you're ready to deploy them. That means you can digitise now, and scale into AI-driven operations when the time is right, without switching systems.



# Features and Benefits

## Real-Time Production Tracking (MES)

**Maximise efficiency. Minimise downtime. Deliver on time.**

- Real-time visibility of planned vs actual production times per operation and resources in use, stopped or idle.
- Dynamic Routing, allowing rapid deployment of works orders, to operations and work centres, to give full real time visibility of what's in work and where.
- People, product and process control. Custom fields can be simply deployed per operation to allow on the spot QA checks and audit data collection.
- Utilise any web-enabled tablet or device for immediate data capture and process tracking.
- Multi-language support ensures usability and accessibility for global teams across diverse language settings.



**"Reduced setup time, reduced idle time, reduced waste."** – Commercial Printing & Branding

**10,000**  
HOURS OF LOST  
PRODUCTION TIME  
RECOVERED

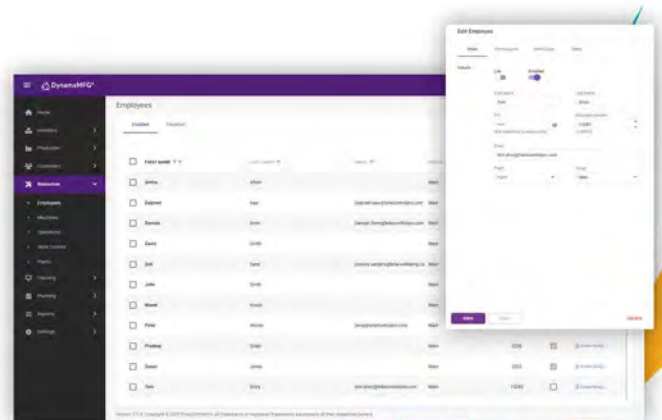
**20%**  
INCREASE IN  
PRODUCTIVITY

**10%**  
DECREASE IN  
DOWNTIME

## Process Adaptability

**Eliminate bottlenecks. Adapt on the fly. Stay competitive.**

- Rapid rerouting of works orders. Efficiently manage reworking and remakes.
- Eliminate production bottlenecks and delays.
- 50% less time spent on issue resolution.
- Supports evolving processes and custom templates.
- Empower production teams to manage by exception.

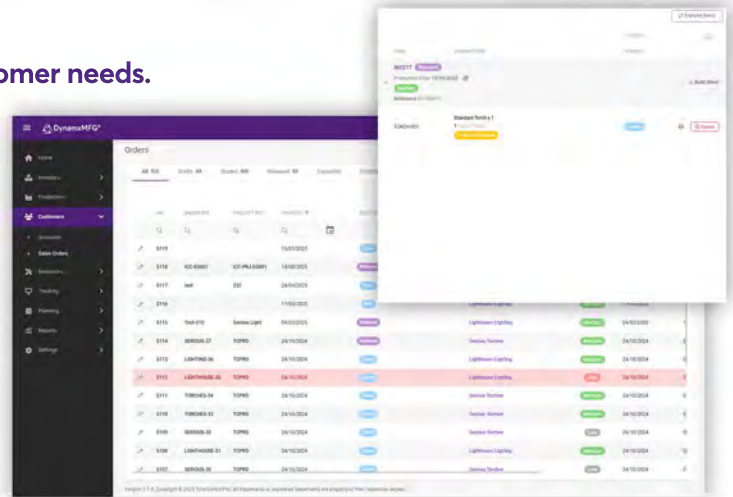


**"Adaptability that grows with your plant, not against it."** – Engineering & Composite Panels

# Customer Relationships

Know what's on order, when its needed, and meet customer needs.

- Build and manage quotes, orders, and works orders with real time access to costs margins and specifications.
- Synchronise with Inventory and material availability for better management of design and manufacturing Bill of Materials (BOM).
- Manage customer order specific details, data and specifications, variations, new requests, and order status.

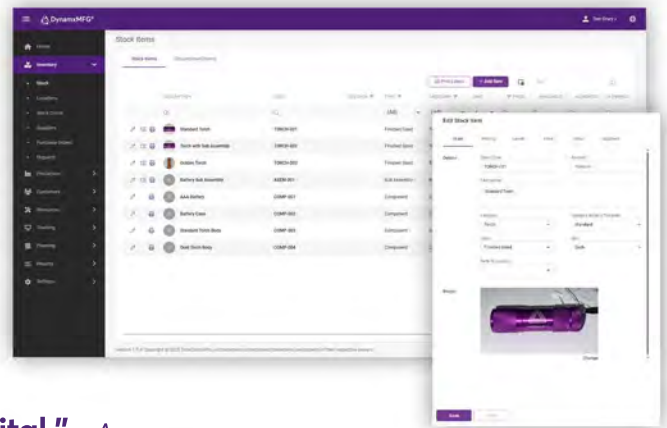


**"From chaos to clarity, and 40% more output."** – Precision Engineering

# Integrated Inventory

Know what's in stock. Use it better. Avoid costly surprises.

- Accurate stock availability, reorder levels and economic build quantities.
- Integrate with shop floor booking in and dispatch functionality for end-to-end order management, confidently track locations, costs & material details.
- Advanced features include serialisation of parts, picking vs auto consumption of materials, real-time management of average/cost pricing and WIP.

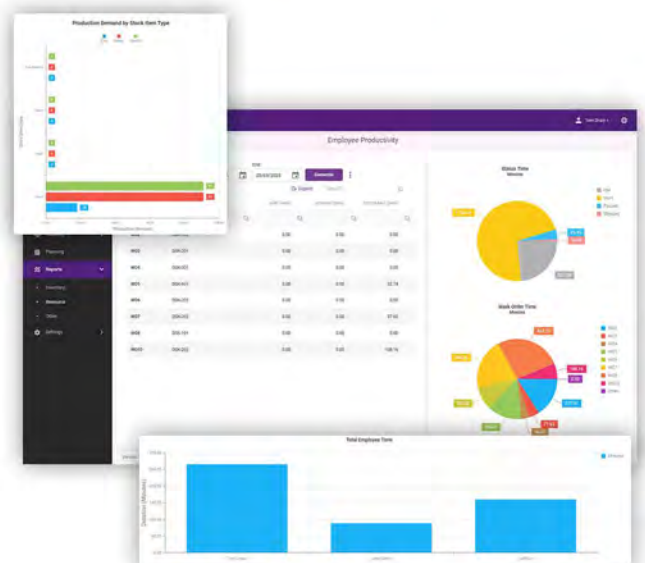


**"DynamxMFG® turned static WIP into working capital."** – Aerospace

# Manufacturing Intelligence

From data to insight. From insight to action.

- Access immediate, real-time standard reports built by manufacturers for manufacturers.
- Unlock visibility of your unique processes via customised reports delivering data-driven insights.
- See what's working and identify the gaps to improve productivity, overall resource efficiency.



**"With insights we reduced pending time between tasks by 48%, increasing overall productivity by 18%."** – Industrial Processing Plant

# Shop Floor Data Capture

Smarter data. Sharper decisions. Stronger performance.

Shop floor interfaces to manage:

- Book goods in.
- Pick and track stock locations.
- Create and track batches and kits.
- Capture data at each production phase.
- Touchscreen and/or QR code tracking.
- Capture QA data and part specific measurements.
- View and manage work allocated to work centres and/or specific resources.

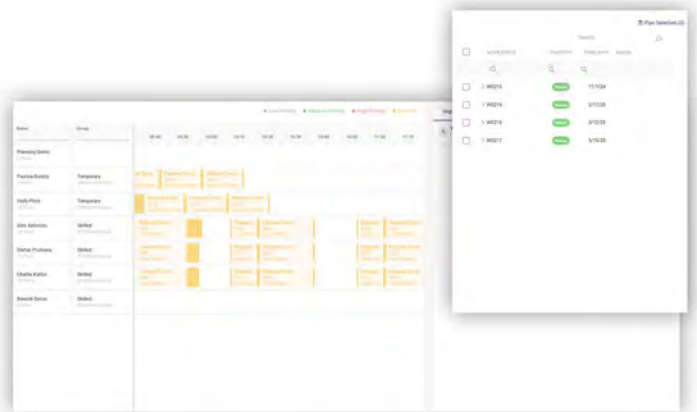


**"The information that is available on the shop floor makes it easier to understand who is doing what and what stage jobs are at. There is a lot less paperwork on the shop floor which is great, as we are no longer fumbling around to find the right sheet for each job, everything is straight to the point on the system in front of you."** - CNC Operator and Programmer - Gloucestershire's Machining Centre

# Planning & Scheduling

Make complex scheduling seem simple.

- Reduce downtime and optimise assets, production capacity, and utilisation to drive productivity improvements.
- Improve on-time-delivery, significantly reduce inventory costs, transform utilisation KPIs such as OLE, OEE.
- Make significant inroads to the companies NetZero targets through optimum use of resources and managing out waste.



**"Automated planning & scheduling tools has reduced asset downtime by 10%, increased JIT deliveries by 50% & halved labour hours on planning."** - Aerospace

**25%**  
REDUCTION IN LEAD  
TIMES RECOVERED

**100%**  
PAPERLESS

**FULL**  
VISIBILITY  
OF THE PROCESS

# Pack Smarter, Dispatch Faster

Improve on time delivery and customer satisfaction.

- Packing and shipment management via digital interfaces and QR scanning.
- Real-time visibility of parts and finished goods, as they are packed and loaded into consignments.
- Manage and report on order fulfilment from packing, palleting and dispatching - pre and post transit.
- Optimise packing in the hands of the dispatch team catering for variable packing and palleting scenarios.



**"Full traceability from order, production, and delivery - saving time on complex consignment processes."** – *Commercial Washrooms*

**10%**  
DECREASE IN  
DOWNTIME

**ALL**  
ORDERS DELIVERED  
ON TIME

**40%**  
PRODUCTION  
IMPROVEMENT

# Fast Agile Deployment

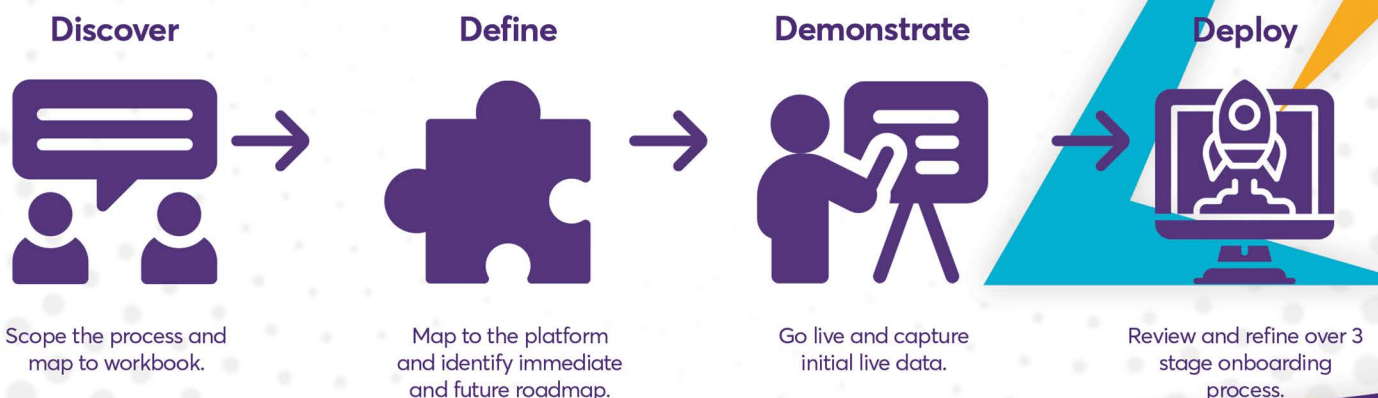
Go live in 90 days. ROI within weeks.

- 6x faster than legacy ERP systems.
- £75K average internal deployment cost savings.
- Hybrid onboarding for rapid time-to-benefit.

**"We saved £75,000 and implemented in 3 months."** - *Contract Manufacturer*

At TotalControlPro®, we are committed to empowering you with total control of your system as quickly as possible, however, we understand there is a process to go through with you to get there.

Think of it as a relay, where we run the start with you, then hand the baton over using a four step approach.



# Integration

## Connect everything. Empower everyone.

Take what works from your current business systems and connect the data across your organisation.

- Integrates with ERP, CRM, CAD, Excel, barcode scanners, and more.
- Seamless data sharing and centralisation.
- Manage your own data automation rules.
- Lower integration and operational costs.
- 35% reduction in workflow friction.

Our current clients are already starting to experience the benefits and opportunities of connecting DynamxMFG® with their existing ecosystem and data sets. For example, using synchronised integration between DynamxMFG® and accounting systems such as Sage, Xero, Quickbooks and Microsoft Business Central, to create a best in class technology stack.



**"By connecting our current systems, DynamxMFG® and HubSpot, on the DynamxMFG® integration platform, we have built an agile manufacturing operations tech stack to serve the group now, and going forward." - Head of Digital Transformation for Europe**

# On Premises vs Cloud Based: What's best for you?

## On Premises

Technology will age quickly. Can be expensive upfront and costs justified long term.

On-premises systems are the responsibility of your own IT team independently.

Does not rely on an internet connection but may struggle connecting info from one part of facility to another.

You will be solely responsible for managing your own data security.

## Cloud Based

Technology updated frequently. Low or no set-up fees and cost is spread over time through subscription.

Scale up and down quickly and cost effectively based on the changing needs of your business.

Rapid implementation allows functionality to be setup and deployed quickly while avoiding disruption to your operations.

Your data is secured by industry leaders and can be accessed remotely for flexible data sharing. Perfect for teams working from home.



# Why Partner with TotalControlPro?

## A Strategic Opportunity

Deliver cutting-edge, AI-ready manufacturing solutions that digitise the shop floor and drive real ROI from day one.

## Partner Benefits

- New revenue streams with recurring subscription model
- Sales and technical enablement
- Joint marketing and co-branding
- Dedicated partner success support
- Access to exclusive resources and training



**"DynamxMFG is a tool that helps me as a consultant unlock the opportunities of a business now and enable continuous improvement."** - *Managing Consultant*

**10%**  
LESS  
DOWNTIME

**20%**  
IMPROVED  
EFFICIENCY

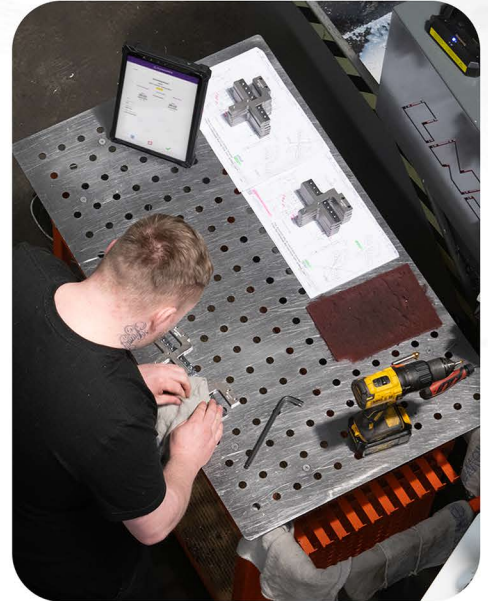
**+30 MIN**  
PRODUCTIVITY  
PER OPERATOR/DAY

DynamxMFG® Case Study

# Gloucestershire's Machining Centre

As GMC expanded its operations, the leadership team faced three interlinked operational barriers:

- **Limited Visibility Across Production.**
- **Lack of Job-Level Profitability Insights.**
- **Capacity Constraints Despite Growth.**



## The Solution: Implementing DynamxMFG®

GMC turned to TotalControlPro and the DynamxMFG® platform to regain control over their operations. What set the solution apart was its rapid deployment and built-for-manufacturers architecture. TotalControlPro's team mapped GMC's processes, configured the system to fit their workflows, and went live in under 90 days - delivering time-to-benefit faster than any ERP or MRP competitor on the market.

### Impact:

#### *From Chaos to Control*

Gloucestershire's Machining Centre has transformed from a growing business constrained by visibility and scheduling challenges into a data-driven manufacturer with end-to-end control of operations. By implementing DynamxMFG®, GMC didn't just deploy a system, they deployed a smarter way of working.

### Business Benefits:

#### *Beyond the Numbers*

#### **Time to Value:**

Fully operational in under 90 days.

#### **Return on Investment:**

Idle inventory, delays, and missed opportunities were reduced. Over the first 12 months, the gains in efficiency and throughput significantly outweighed the system investment.

#### **Strategic Value:**

DynamxMFG® enabled GMC to scale production without scaling headcount.

### Key Objectives Achieved

- **Profitability at Every Job Level.**
- **Real-Time Job and Part Tracking.**
- **Identify and Clear Bottlenecks.**
- **Maximising Output Without Adding Headcount.**

**INCREASED**  
UTILISATION

**40%**  
INCREASE IN  
CAPACITY

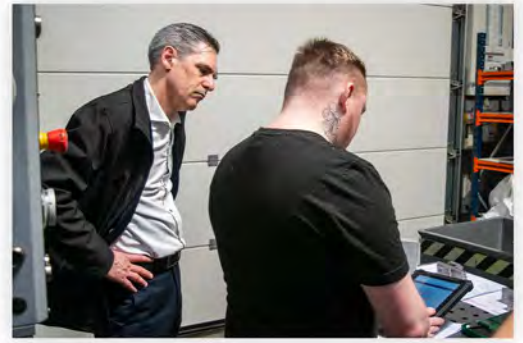
**IMPROVED**  
ON TIME DELIVERY

# Why Choose TotalControlPro?

**Mission:** Empowering SME manufacturers to thrive sustainably through digital transformation.

**Vision:** The go-to technology partner helping global manufacturers thrive in a connected world.

**Core Values:** Productivity | Agility | Integrity | Simplicity (PAIS)



**30%**  
INCREASED  
PRODUCTIVITY

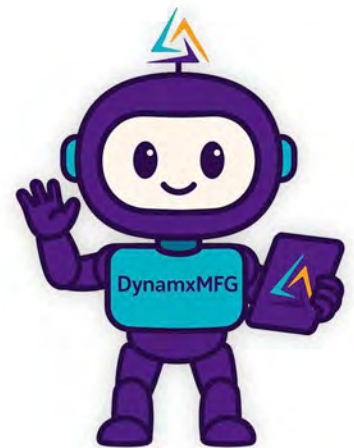
**25%**  
REDUCTION  
IN WASTE

**30%**  
REDUCTION IN  
CARBON EMISSIONS

## A Future-Ready Co-Pilot For Industry

Laying the groundwork for artificial intelligence (AI), machine learning and automation for your business.

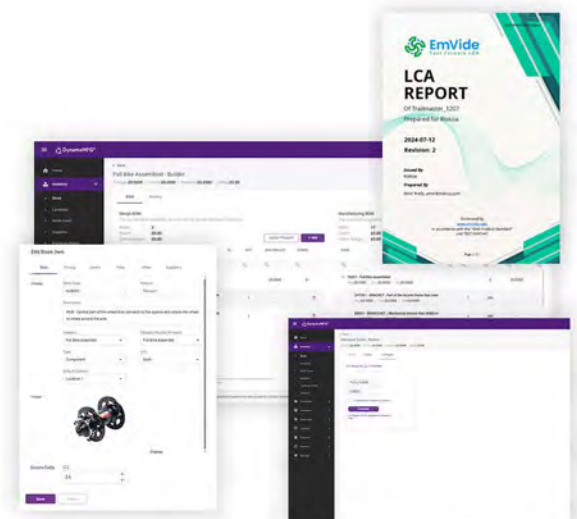
- Enable predictive maintenance.
- Capture enriched, synchronised data.
- Boost ROI with intelligent automation over time.



## CBAM Compliance with DynamxMFG® & Emvide™ Smart Solutions

As global trade adapts to the EU's Carbon Border Adjustment Mechanism (CBAM), manufacturers must stay ahead by integrating environmental compliance into their core operations.

DynamxMFG® seamlessly merges real-time production data with carbon accountability, generating precise Lifecycle Assessment (LCA) data directly from inventory and production routing. Paired with Emvide™, businesses can now automate environmental impact disclosures, streamline compliance, and build transparent supply chains.



# Client Testimonials

**"The ability to dynamically modify BOMs after release – adding or removing items from work orders, scrapping and reworking parts – has been the single biggest improvement for our business."**

- Andrew Toy  
Managing Director



**"DynamxMFG® has enabled us to establish the true cost per tyre produced, allowing us to make decisions based on big data."**

- Fraser Flint  
Production Manager



**"DynamxMFG® enables us to review, optimise and reward performance and compare actual costs against predicted costs for each job."**

- Daniel Laverick  
Production Manager



**"As GMC has grown, it had become harder for me to have such a keen view on components to see if those parts were profitable or not. DynamxMFG® enabled us to monitor the machine time and measure the profit on each component."**

Paul Bland  
Managing Director





# DynamxMFG<sup>®</sup>

## From TotalControlPro<sup>®</sup>

The right resources,  
• At the right place,  
• At the right time,  
Doing the right task,  
Against the right job.

**IMPROVED**  
LABOUR & MACHINE  
UTILISATION

**OPTIMISED**  
USE OF RAW  
MATERIALS

**REDUCED**  
WASTE

☎ +44(0) 345 680 4045  
✉ [sales@totalcontrolpro.com](mailto:sales@totalcontrolpro.com)  
🌐 [www.totalcontrolpro.com](http://www.totalcontrolpro.com)  
📍 Vulcan Works, 34-38 Guildhall Road,  
Northampton, NN1 1EW



**SCAN ME**

