



## Quality &Service



GWEIKE has more than 200 R&D personnel and has obtained more than 160 national and technical authorized patents, including more than 30 invention patents. GWEIKE has won a lot of national and international awards including IF Design Award, Red Dot Award, etc.



Sheet metal processing center, gantry milling workshop, robot welding production line, annealing workshop, assembly workshop, electrical assembly and electrical debugging workshop, and testing workshop, GWEIKE strictly controlled the quality through more than 120 processing procedures.



GWEIKE Laser has continuously expanded 10 after-sales centers, improved its after-sales service system, and established an after-sales service mechanism with 300 gold medal engineers, 7x24 hours online, 30-minute quick response, and global coverage of online and offline service.

## Cooperative Brand



### GWEIKE TECH CO.,LTD.

📍 13A, Building D, Big Data Industrial Base, Xin Lou Street, High-tech Zone, Jinan, China  
✉ E-mail: [sales@wklaser.com](mailto:sales@wklaser.com)  
☎ Hotline: **+86-531-88020976** Fax: **+86-531-88912386**  
🌐 <https://www.gweikecnc.com> <https://www.gwklaser.com>

PROFESSIONAL PROFESSIONAL  
EQUIPMENT MANUFACTURER LASER EQUIPMENT MANUFACTURER LASER

CUT | BEND | WELD

ABOUT / PRODUCTION  
GWEIKE / BASE



Established in  
**2004**

Production Base  
**200000+㎡**

Annual Output  
**20000+Sets**

Global Sales  
**100000+Sets**

Established in July 2004, GWEIKE Laser is a high-tech corporation, with production bases of over 200,000 square meters, an annual capacity of 20,000+ units, 300+ national patents, the ability to release 5+ new models per year and multiple certifications including TÜV Rheinland CE, FDA and ISO9001.

GWEIKE Industrial Design has won national awards such as IF Design Award, Red Dot Award, Muse Design Award, IDA Design Award, and etc. Its main business contains high-power fiber laser cutting machines, automatic laser production lines, 3D five-axis technology, new-energy power batteries, ultra-precision cutting tools and services. So far GWEIKE Laser products have been introduced to over 180 countries and regions.



Intelligent comprehensive  
production base



Shenzhen R&D Center



Fiber R&D and production base



Shandong production base



Shandong sheet metal supporting  
production base

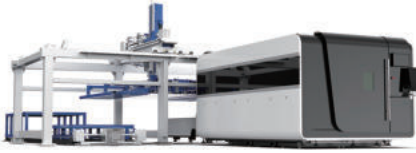


Overseas MarketingTeam



## AUTOMATIC LOADING SERIES

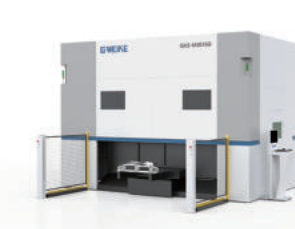
### GAS-SERIES



#### AUTOMATIC MATERIAL STORAGE SYSTEM FOR MEDIUM AND HEAVY PLATES

Machine Model	LF3015GAS / LF4020GAS / LF6025GAS
Laser power	1500W/2000W/3000W/6000W
Maximum loading plate size	3000*1500mm/ 4000*2000mm/ 6000*2500mm
Minimum loading plate size	1200*1000mm/1500*1500mm
Maximum loading and unloading plate thickness	14mm(Plates above 10mm are customized models)
Maximum loading and unloading plate weight	350kg/ 630kg/1650kg
Dimensions	12000*8200*4100mm/15000*9000*4100mm/ 22800*14900*4600mm

### GKS-M3015G



#### 3D FIVE-AXIS LASER CUTTING MACHINE

Machine Model	GKS-M3015G	GSK-M3122G	GSK-M4025G
Distance	X axis≥3000mm/Y axis≥1500mm /Z axis≥650mm	X axis≥3100mm/Y axis≥2200mm /Z axis≥650mm	X axis≥4000mm/Y axis≥2500mm /Z axis≥750mm
Speed	X/Y/Z axis≥100m/min	X/Y/Z axis≥100m/min	X/Y/Z axis≥80m/min
Acceleration	X/Y/Z axis≥1g	X/Y/Z axis≥1g	X/Y/Z axis≥1g
Positioning accuracy	X/Y/Z axis±0.05mm	X/Y/Z axis±0.05mm	X/Y/Z axis±0.05mm
Repeat positioning accuracy	X/Y/Z axis±0.03mm	X/Y/Z axis±0.03mm	X/Y/Z axis±0.03mm
Three-dimensional five-axis cutting head			
Distance	C axis Nx360°、A axis±135°	C axis Nx360°、A axis±135°	C axis Nx360°、A axis±135°
Speed	C/A axis≥90r/min	C/A axis≥90r/min	C/A axis≥90r/min
Acceleration	C/A axis≥90rad/s²	C/A axis≥90rad/s²	C/A axis≥90rad/s²

#### COIL LASER CUTTING PRODUCTION LINE

Machine Model	GKS-CPL3015B/ CPL4015B/ CPL6015B/ CPL6020B2
Laser power	1000W-6000W
Working area	3000*1500mm/ 4000*1500mm/ 6000*1500mm/ 6000*2000mm
Dimensions	16500*6500*2500mm/ 18500*6500*2500mm/ 22000*6500*2500mm/ 24000*7000*2500mm
Thickness of coiled material	0.8-3.0mm
Coiled material width	500-1500mm/ 500-1500mm/ 500-1500mm/ 500-2000mm
Coil weight	10T/15T(Customizable)
Feeding speed	Max 20m/min
X/Y axis cutting stroke	1525mm/3025mm;1525mm/4025mm;1525mm/6025mm; 2025mm/6025mm
X/Y axis cutting repeat positioning accuracy	±0.03mm
X/Y axis Maximum positioning speed of single axle	120m/min

### GKS-BC0520P



#### AUTOMATIC BENDING CENTER

Machine Model	GKS-BC0520P / GKS-BC0315P		
Feeding structure	Press Arm	Bending angle	0-180°
Number of axes	Standard 13 axis	Bending capacity	Carbon steel plate: 1.5mm; Stainless steel plate: 1.2mm; Aluminum plate: 3mm
Maximum bending length	2100mm/1500mm		
Maximum bending height	200mm	The rated voltage	AC380V
Maximum sheet length	2000mm/1500mm	Peak power	About 43KW
Maximum sheet width	1500mm/1250mm	Average power	About 5KW
Minimum continuous bending speed	0.2S	Total machine weight	About 13.7T / About12T
Minimum arc radius	3mm	Dimensions	5470*3200*2790mm; 4580*2510*2790mm
Maximum feeding speed	120m/min		

### GKS-LC3008R



#### ROBOT INTELLIGENT HIGH-SPEED LASER CLADDING

Machine Model	GKS-LC3008R
Laser power range	3000W-6000W
Clamping range	Φ≤800mm
Equipment maximum load	≤3000kg
The maximum positioning speed of the device	60m/min
Equipment positioning accuracy	±0.05mm/m
Repeat positioning accuracy	±0.03mm/m
Length of processing workpiece	≤3000mm
Cladding head	Gweike Cladding Head

## PROFESSIONAL PLATE SERIES

### GH-SERIES



#### ULTRA-HIGH POWER LARGE-FORMAT LASER CUTTING MACHINE

Machine Model	LF12025GH/ LF8025GH/ LF6025GH/ LF4020GH
Laser power	135000W/ 60000W/ 40000W/ 30000W/ 20000W/ 12000W/ 6000W(Optional)
Working area	12500*22650/ 8050*2530/ 6050*2530/ 4050*2030mm
Repeat positioning accuracy	±0.02mm
Max. Running speed	200m/min

### GAIII-SERIES



#### GA III 5-YEAR WARRANTY FIBER LASER CUTTING MACHINE

Machine Model	LF6025GAIII / LF4020GAIII / LF3015GAIII
Laser power	12000W/8000W/6000W/4000W/3000W
Working area	6050*2530/ 4050*2030/ 3050*1500mm
X/Y axis positioning accuracy	±0.03mm
X/Y axis repeat positioning accuracy	±0.02mm
Max. Running speed	100m/min

### GA-SERIES



#### DUAL PLATFORM FIBER LASER CUTTING MACHINE

Machine Model	LF8025GA/ LF6025GA/ LF4020GA/ LF3015GA
Laser power	12000W/8000W/6000W/4000W/3000W/2000W/1500W
Working area	8050*2530/6050*2530/4050*2030/3050*1530mm
X/Y axis positioning accuracy	±0.03mm
X/Y axis repeat positioning accuracy	±0.02mm
Dimensions	19453*3880*2215mm 14577*3880*2215mm 10138*3380*2215mm 8580*2880*2215mm

### P-SERIES



#### WHOLE COVER FIBER LASER CUTTING MACHINE

Machine Model	LF3015P II
Working area	3000*1500mm
Laser power	6000W/4000W/3000W/2000W/1000W
X/Y axis positioning accuracy	±0.03mm
X/Y axis repeat positioning accuracy	±0.02mm
Dimensions	4700*3340*2450mm

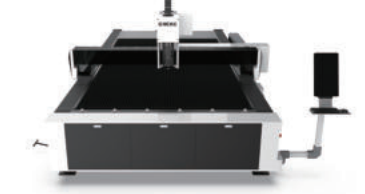
### 1390-SERIES



#### DUAL DRIVER BALL SCREW FIBER LASER CUTTING MACHINE

Machine Model	LF1390
Laser power	3000W/2000W/1500W/1000W (optional)
Dimension	2160*2110*1900mm
Working area	1300mm x 900mm
Repeated positioning accuracy	±0.02mm

### LN II-SERIES



#### DUAL DRIVER GEAR RACK FIBER LASER CUTTING MACHINE

Machine Model	LF4020LN II/ 6015LN II/ 6020LN II/ 6025LN II
Laser power	1000W-12000W(Optional)
Working area	4100*2050mm/ 6100*1550mm/ 6100*2050mm/6100*2550mm
Dimensions	5800*3512*2250mm/ 7800*3012*2250mm/ 7800*3512*2250mm/ 7800*4100*2250mm
Repeated positioning accuracy	±0.03mm
Max. running speed	100m/min

### E PRO-SERIES



#### ECONOMICAL FIBER LASER CUTTING MACHINE

Machine Model	LF3015E II
Working area	3050*1530mm
Laser power	1000W/1500W/2000W/3000W
X/Y axis positioning accuracy	±0.03mm
X/Y axis repeat positioning accuracy	±0.02mm
Dimensions	4480*2766*1950mm

### SLG-SERIES



#### FLOOR RAIL TYPE LARGE PANEL BEVELING CUTTING MACHINE

Machine Model	16032SLG	24032SLG
Working area	16000*3200mm(Customizable)	24000*3200mm(Customizable)
Laser power	6000W(Customizable) 4000W/3000W/2000W/1200W	
X/Y axis positioning accuracy	0.1/10m&0.05/5m	
X/Y axis repeat positioning accuracy	±0.05mm	

## PROFESSIONAL TUBE SERIES

### GKS-6024T2



#### PROFESSIONAL TUBE CUTTING MACHINE

Machine Model	GKS-6024T2/9024T2/6028T2/9028T2/6036T2/9036T2		
Laser power	1500W-6000W		
Clamping range	Round pipe Φ20-240/ 20-280/ 20-350mm Square pipe □20-240/ 20-280/ 20-250mm I-beam 10#-18# /10#-20#/ 10#-22#	• Optional: • Fully Automatic • Semi Automatic	
Maximum rotating speed	100r/min/ 100r/min/ 60r/min		
Effective cutting length of pipe	6500mm / 9500mm		
Single pipe load-bearing	300KG /400KG /500KG		

### GKS-6008TA



#### FULLY AUTOMATIC ECONOMICAL TUBE LASER CUTTING MACHINE

Machine Model	GKS-6008TA
Pipe diameter range	Tube length: 6500mm
(diameter of circumscribed circle)	Φ15-80mm (Round tube) □15- 60mm (Square tube)
Maximum pipe length	6500mm
X-axis travel	100mm
Y axis single feeding length	0-700mm
Z-axis travel	100mm
Maximum rotating speed	150r/min

### GKS-12036T3



#### THREE-CHUCK HEAVY DUTY TUBE LASER CUTTING MACHINE

Machine Model	GKS-6036T3/GKS-9036T3/GKS-12036T3
Laser power	3000W-12000W
Clamping range	Round pipe Φ30-350mm Square pipe □ 30-350mm
Maximum rotating speed	60 r/min
Effective cutting length of pipe	6500mm / 9500mm / 12500mm
Single pipe load-bearing	1200KG

### GKS-6024TG



#### FRONT CHUCK REMOVABLE TUBE LASER CUTTING MACHINE

Machine Model	GKS-6024TG/GKS-9024TG/GKS-6028TG/GKS-9028TG	
Laser power	1500W-6000W	
Clamping range	Round pipe Φ20-240mm / 20-280mm Square pipe □ 20-240mm/ 20-280mm	• Optional: • Bevel Cutting • Fully Automatic • Semi Automatic • Unloading Rack
Maximum rotating speed	100 r/min	
Effective cutting length of pipe	6500mm / 9500mm	
Single pipe load-bearing	300KG/ 400KG	

### GKS6036T3L



#### THREE-CHUCK HEAVY LASER TUBE CUTTING MACHINE

Machine Model	GKS-6036T3L/GKS-9036T3L/GKS-12036T3L	
Laser power	2000W-12000W	
Clamping range	Round pipe Φ20-350mm Square pipe □20-250mm	• Optional:  • Fully Automatic • Semi Automatic
Maximum rotating speed	65 r/min	
Effective cutting length of pipe	6500mm/ 9500mm/ 12500mm	
Single pipe load-bearing	700KG	

## PLATE & TUBE LASER CUTTING MACHINE

### GAR-SERIES



#### DOUBLE PLATFORM PLATE AND TUBE LASER CUTTING MACHINE

Machine Model	LF6025GAR/ LF4020GAR/ LF3015GAR
Laser power	12000W/6000W/4000W/3000W/2000W/1500W
Working area	6050*2530/4050*2030/3050*1530mm
X/Y axis repeat positioning accuracy	±0.02mm
DimensionsChuck	14446*5084*2215mm/10275*4584*2215mm/9473*4080*2215mm
Chuck clamping diameter	Square Clamp 240: Φ20-240mm □ 20-240mm Square Clamp 280: Φ20-280mm □ 20-280mm Round Clamp 350: Φ20-350mm □ 20-245mm

### LN-R-SERIES



#### DOUBLE PLATFORM PLATE AND TUBE LASER CUTTING MACHINE

Machine Model	LF3015LNR
Laser power	6000W/3000W/2000W/1500W/1000W(Optional)
Working area	3050mmx1530mm
Clamping range	Round pipe Φ20-240mm Square pipe □ 20-240mm
Repeated positioning accuracy	±0.02mm
Chuck structure	240 Pneumatic Chuck
Dimensions	4520*3985*1985mm

## HANDHELD LASER WELDING & CLEANING & CUTTING MACHINE

### LCW-SERIES



#### HANDHELD LASER WELDING & CLEANING & CUTTING MACHINE

Machine Model	LCW1500/LCW2000/LCW3000
Laser power	1500W/2000W/3000W
Laser wavelength	1080nm
Working voltage	Single phase 220V 50/60HZ Three phase 380V 50/60HZ
Fiber length	10-20m ( Customizable)
Power adjustment range(%)	10-100 (Gradient adjustable)
Laser head weight	0.8KG
Dimensions	910*540*1100mm/910*540*1100mm/1210*650*1200mm

## ELECTRO-HYDRAULIC SERVO PRESS BRAKE

### CNC BENDING



#### ELECTRO-HYDRAULIC SERVO PRESS BRAKE

Machine Model	GWK-10032	GWK-25042
Hydraulic oil Tank Capacity	220L	470L
Press Capacity	100T	250T
Max Bending Length/MM	3200mm	4200mm
Side Distance/MM	2600mm	3400mm
Gap Depth/MM	400mm	400mm
Opening Height/MM	480mm	500mm
Working Speed MM/S	10mm/s	8mm/s