

QUANTUM 4 MANUAL

QCT's commitment to the CMM industry has led to the development of the Quantum 4, a superior co-ordinate measuring machine designed from the wealth of experience offered by the QCT team

MANUAL CO-ORDINATE MEASURING MACHINE



0537 for CMM Calibrations



Certificate no. 91337



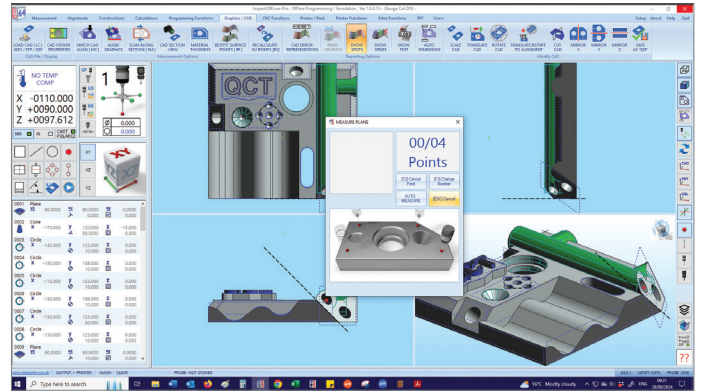
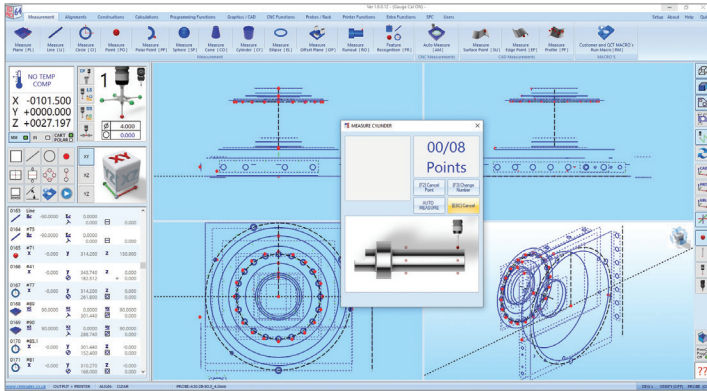
QUANTUM 4

Manual Co-ordinate Measuring Machine

The **Quantum 4** is a top quality highly accurate co-ordinate measuring machine designed and manufactured in the UK using the latest computerised stress analysis to produce a rigid, stable and accurate CMM. The CMM is currently available in several size variations and is supplied with our user friendly inspection software.

STANDARD FEATURES

- Pre-loaded air bearings on all axes
- Individual locks on all axes
- M8 clamping inserts
- Air and water filters
- Renishaw 0.5µm scale
- Renishaw TP8 Probe
- 3D-Pro64 geometric software
- Quality precision workstation
- Computer desk
- Calibration sphere
- 1 Year Warranty



DIMENSIONS AND CAPACITY

Model		4-665	4-6105	4-8105
Measuring Travel:	X	610mm	610mm	810mm
	Y	650mm	1050mm	1050mm
	Z	550mm	500mm	500mm
Maximum Work Piece Weight:		400kg	500kg	600kg
Machine Weight:		500kg	650kg	750kg
Overall Dimensions:	Width	1090mm	1090mm	1290mm
	Depth	1155mm	1555mm	1555mm
	Height	2340mm	2340mm	2370mm
Volumetric Accuracy:	TP20	4.0+L/250µm	4.0+L/250µm	5.0+L/200µm

Air supply 60 PSI / 4 Bar Larger machines available on request

* Measuring Range Variations X: 600, 800, 1000 Y: 600, 800, 1000 Z: 500, 700

OPTIONS

- Fine feed controls
- Active Temperature Compensation System
- Upgrade to CNC
- Upgrade to MH20i Probe System
- Inspection direct to CAD [3D-Pro64(+CAD) software]



T: 01332 572 882 E: sales@qctderby.co.uk www.cmmsales.co.uk

QUALITY CONTROL TECHNOLOGY LIMITED

Westside Park | Belmore Way | Derby | DE21 7AZ

All specifications listed in the brochure are subject to change without notice