

---

# **Turbex**

**PRECISION CLEANING**

The background of the lower half of the advertisement is a vibrant orange color. It features several large, translucent bubbles of varying sizes, some of which are in sharp focus while others are blurred in the background, creating a sense of depth and movement. The bubbles appear to be floating in a liquid, likely representing the cleaning process.

# **Your dependable component cleaning partner**

Whatever you need – whether it's a bespoke solution, a standard machine or an aftercare service – our attitude is always the same; never compromise.

**[www.turbex.co.uk](http://www.turbex.co.uk)**

# Turbex

PRECISION CLEANING

# Introduction

For over 40 years, we've provided hundreds of businesses throughout the UK and Ireland with the right component cleaning solution.

To do what we do, for as long as we've done it, being dependable is non-negotiable. No matter the customer, or their requirement, Turbex ensures a service and solution that's fairly priced, delivered on time, and void of nasty surprises.

A clean component is a dependable one. The same goes for the partner you choose.

In this brochure, you'll learn more about who we are, what we can do for your business, our cleaning solutions, and much more.

Hopefully, when you reach the back page, you'll be confident that Turbex is the dependable component cleaning partner you're looking for.

Thank you for reading. I hope this is the start of a great partnership.

Warmest regards,

**John Huntingdon**  
Managing Director



We're based in Alton, Hampshire, and we believe that component cleaning is **necessary, not evil.**

Manufacturers want bigger, more powerful machines, producing more parts per hour to increase profitability. But the cleanliness of the parts they're producing is often an afterthought.

The reality, though, is that a cleaner part is a more dependable part.

And a more dependable part means a more dependable process – one that prolongs tool life, enhances part reliability and durability, increases ROI, and, most critically, delights customers.

Turbex has spent over 40 years providing businesses like yours with component cleaning solutions that are as dependable as our people and services. And we've taken it upon ourselves to show the world that component cleaning is not an add-on or a token.

It's necessary, not evil.

# What can we do for you?

The short answer is that we can pair your business with the optimal system and equipment – no matter your requirements. The long answer looks something more like this.

## Precision cleaning

Our extensive, tried and tested range of precision cleaning solutions are loved by businesses nationwide, and have been for over 40 years.

- Ultrasonic Cleaning
- Spray Washing
- Passivation
- Solvent Cleaning
- Drying
- Customised Solutions

## Surface treatment

When only the utmost precision will do, you choose an automated surface treatment plant that won't let you down.

- Automated Anodising Lines
- Automated Chemical Cleaning
- Automated Chemical Etching

## Inspection

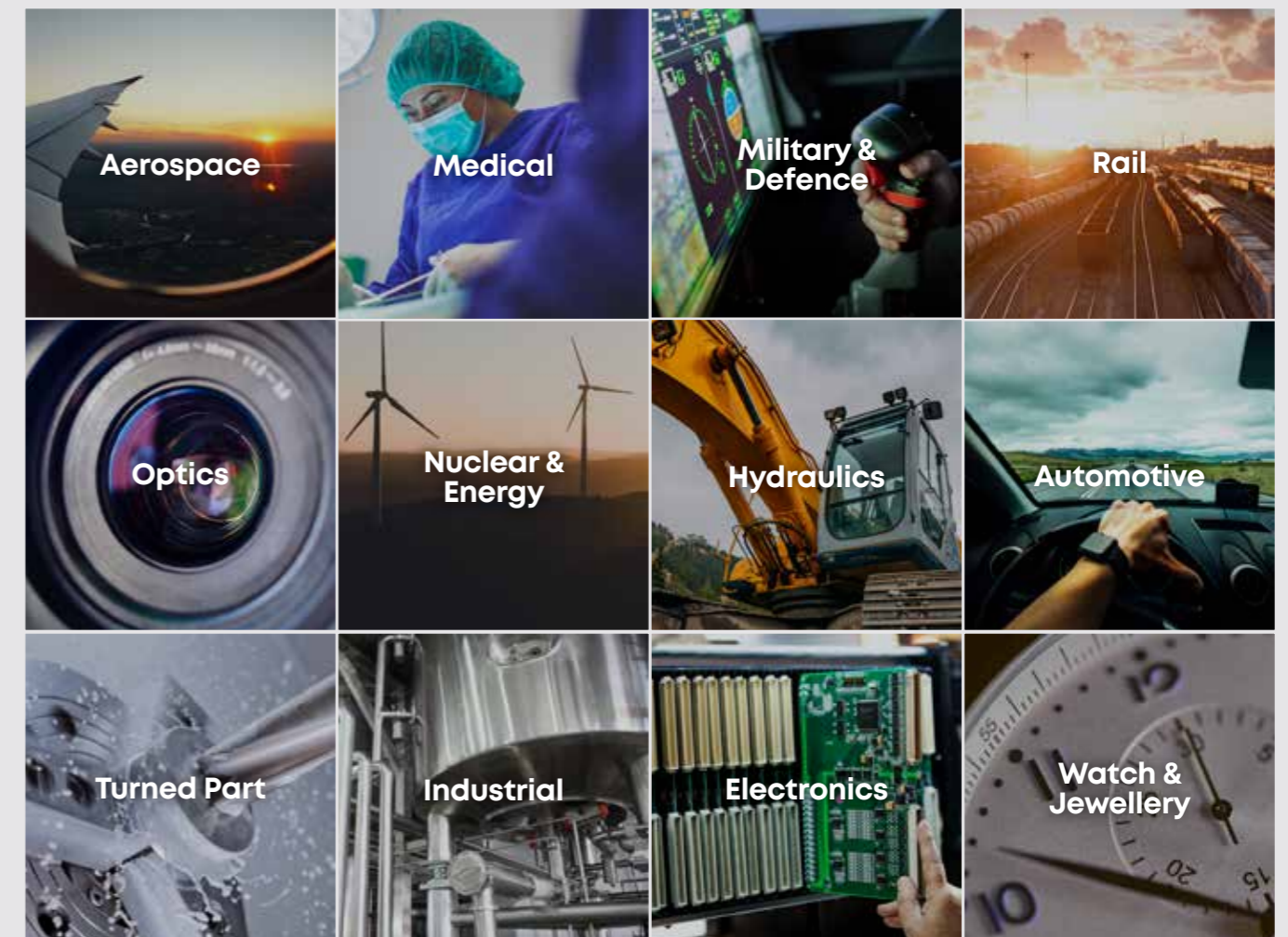
We can offer equipment that can safely examine the health and cleanliness of your component or material without causing damage.

## Depowdering

Our newest, most advanced offering will prepare your metal-laser-melted components for success in the years ahead.

## We're the dependable cleaning partner for a whole host of sectors.

Our expertise spans far and wide, and our solutions are built to meet the needs of your industry.



# Plus, we're trusted by the industry's best.

We're proud to supply you with industry-leading component cleaning machines and solutions from the most dependable European manufacturers.

We hold exclusivity agreements with our partners to supply their solutions here in the United Kingdom and Ireland.



## What makes us different?

It isn't just our mission that sets us apart; we're built differently, too. We pride ourselves on delivering services as unique as your needs.



### Consultative approach

We know you're unlikely to know the exact solution you need. You just know you need one.

That's why we take a consultative approach with every customer. We work with you from initial enquiry to installation and beyond – answering your questions, and guiding you to the optimal solution for your budget and application.

### Aftersales support

Your relationship with us doesn't end with a sale. If anything, it starts there. We pride ourselves on delivering robust, helpful, and ongoing aftersales support, so you always get the best from us, and your cleaning solution.

### Bespoke solutions

Sometimes, a custom solution is the only way to fulfil your needs. Luckily for you, we can accommodate. We can provide complete and flexible systems that are explicitly tailored to your business and requirements.

### Decades of expertise

Our people know their stuff. They've been absorbing industry know-how for over 40 years, meaning you can be confident they can give you the answers and insight you need to make the most informed decision.

### Component cleaning trials

If you need it cleaned, we won't just find the best way to do it – we'll show you.

At our Cleaning Technology Centre, we host extensive trials for both new and existing customers that put your components, and our high-quality solutions to the test, and show you results.

### Analysis and reporting

Once your trial is complete, we'll provide you with a comprehensive report. Inside, you'll find the most effective way to meet the cleanliness levels you require, and the optimal machine to fulfil it.

# Step inside our Cleaning Technology Centre

As we say, component cleaning is fundamental within the manufacturing process. And we prove this at our state-of-the-art Cleaning Technology Centre in Alton, Hampshire.

## And you're invited to join us.

Here are some of the services available to you at the Cleaning Technology Centre:

- Spray Washing
- Ultrasonic Cleaning
- Precision Cleaning
- Drying
- Solvent or Aqueous Solutions
- Manual & Automated Systems

## What solutions do we offer?



## Ultrasonic Cleaning

Ultrasonics are the perfect cleaning choice when nothing but precision will do. Ultrasonics uses powerful cavitation (the creation and violent implosion of microscopic bubbles) to thoroughly clean your components - slashing cleaning time by up to 90%. Ultrasonics can also be combined with rotation for an even more exacting clean. Another option is to include a passivation process.

### Choose ultrasonic for:

- Medical Implants
- Photonics
- Turbine blades & NGV's
- Engine control
- Watch & Jewellery
- High vacuum technology
- 3D printed parts (Post depowdering)



## Spray Washing

Spray washing delivers a dependable clean every single time. Hot detergent liquid is sprayed at pressure from all directions inside an enclosed stainless-steel chamber - removing even the heaviest dirt. Spray washing is often combined with rotational cleaning, and can also be paired with flooding and ultrasonics for higher performance.

### Choose spray washing for:

- Aircraft engine components
- Train bogies, wheelsets, traction motors
- Drivetrain
- Aerostructures & Landing gear
- General-purpose heavy-duty maintenance
- Pre-treatment
- Hydraulics



## Solvent Cleaning

Only solvent cleaning will do when large quantities of neat oils and grease need removing. From degreasing surfaces, to removing contaminants and particles, solvent cleaning systems are always up to the job.

### Choose ultrasonic for:

- Turned parts
- Aerospace components
- Deep drawn parts
- Mixed metals
- Fast throughput



## Drying

Efficient drying is critical to keep your production efforts moving. Our systems protect your product, and ensure a quality finish, whilst keeping drying timeframes short.

### Choose drying for:

- Vacuum drying
- Hot air drying
- Infra-red drying



## Baskets, Fixtures & Accessories

We offer a wide range of baskets, fixtures and accessories that partner perfectly with our component cleaning machines. They arrive in many shapes and sizes, and can also be fully customised to suit your orientation and quantity needs, too.

### Choose baskets, fixtures & accessories:

- Improve the overall performance of the base machine
- Enhance and streamline your cleaning process
- Position and clean delicate or specialist components



## Customised Cleaning Systems

If any of our whopping 150+ standard units fail to meet your requirement, we can proudly provide your business with a customised cleaning system.

From initial cleaning trials in our Cleaning Technology Centre, to the design, development, and implementation of your system, you can depend on Turbex to provide your optimal custom solution.

### Choose customised systems for:

- Aerospace
- Automotive
- Medical
- Tunnel Wash
- Precision Optics
- Electronics
- Component Manufacturing
- Industrial
- Hydraulics
- Nuclear & Energy



# Surface Treatment

Surface treatment is a popular choice for Aerospace applications. Whether it is stripping a coating or chemical cleaning heavily contaminated engines, the lines are purpose built to meet the individual requirements.

This is also the case for automated Anodising lines. These automated systems offer the latest technology, not only for environmental and H&S purposes, but also repeatable and reliable processing.

### Choose surface treatment options:

- Automated Anodising Lines
- Automated Chemical Cleaning Lines
- Automated Chemical Etching Lines



# Non-Destructive Testing (NDT)

We can supply equipment for the preparation of Non-Destructive Testing (NDT) inspection. This stringent inspection process safely tests the health of your component or material – ensuring any surface defects, cracks, or faults are swiftly identified.

### What is Non-Destructive Testing?

NDT can detect surface defects, and invisible cracks and faults in a wide range of metals and non-porous materials. The most common NDT application is Fluorescent Penetrant Inspection (FPI).

### What can it be used for?

NDT is commonplace in the Aerospace, Medical and Automotive sectors, where components are placed under immense pressure and stress, and must maintain safe operation at all times.

### Common components for inspection

- Engine parts
- Aerostructures
- Brake parts
- Wheel hubs
- Landing gear
- Automotive parts



# Depowdering

Depowdering is a game-changing post-processing solution, that's commonplace in the Additive Manufacturing sector. Together with Solukon, we deliver the safest, most advanced depowdering solutions that Blue Chip organisations trust. This includes the likes of NASA and Siemens.

### Choose depowdering when:

- Working with complex geometries
- As a pre-cursor to component cleaning processes
- Running an unmanned or automated process

# After-sales Support and Service



You've just seen the breadth of cleaning systems and solutions we can offer your business, but our services don't stop there.

We're proud to deliver after-sales support and servicing that is as dependable and robust as our machines.

By choosing Turbex, you'll benefit from our team of nationwide service engineers, who can provide next-day (and sometimes even same-day) repairs, simple spares and replacement parts, and access to our kind and helpful sales team, who can assist you anytime.

## Are we the dependable component cleaning partner for you?

Our expert team are on hand to help your business today. All you have to do is get in touch.

### Come and see us:

Turbex, Unit 1,  
Riverway Industrial Park,  
Newman Lane,  
Alton, Hampshire  
GU34 2QL

### Give us a call:

+44 (0) 1420 544 909

### Find us online:

[www.turbex.co.uk](http://www.turbex.co.uk)

### Reach us via email:

[sales@turbex.co.uk](mailto:sales@turbex.co.uk)  
[service@turbex.co.uk](mailto:service@turbex.co.uk)

**Turbex**  
PRECISION CLEANING



# **Turbex**

**PRECISION CLEANING**

**E: [sales@turbex.co.uk](mailto:sales@turbex.co.uk)**

**T: +44 (0) 1420 544 909**

**[www.turbex.co.uk](http://www.turbex.co.uk)**

Turbex Ltd, Unit 1 Riverway Industrial Park,  
Newman Lane, Alton, Hampshire GU34 2QL

Precision Cleanin | Surface Treatment | Depowdering