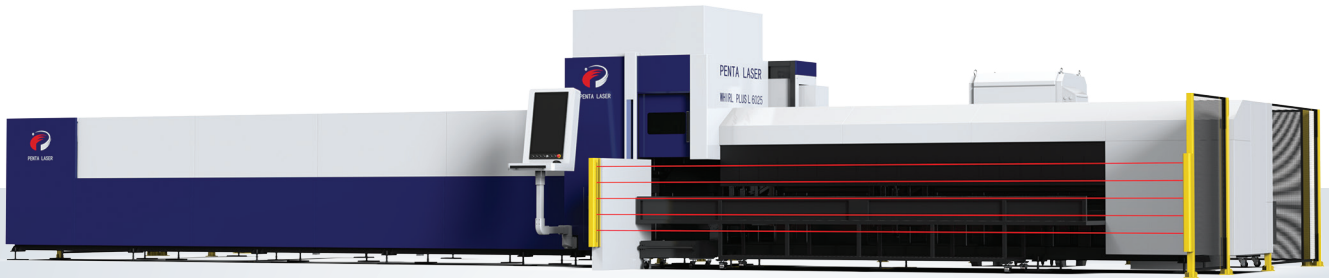


PENTA LASER UK^{LTD}

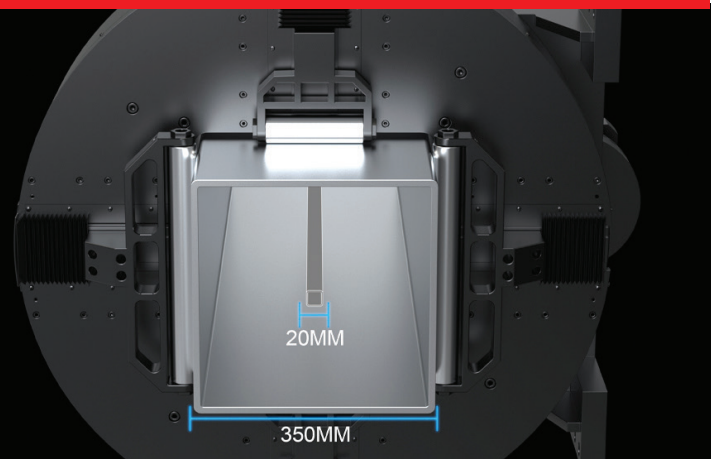
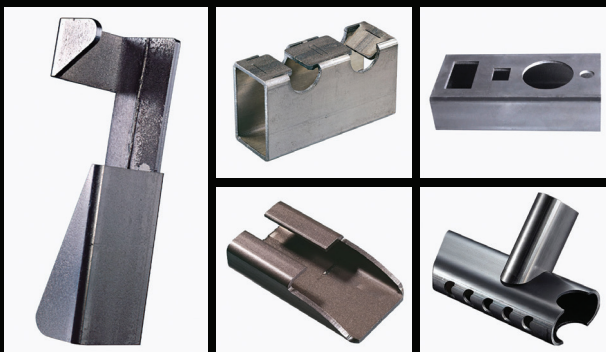
WHIRL PLUS

FIBER LASER CUTTING FOR TUBULAR PRODUCTS



- High Performance Tube Cutting
- Heavy Duty Industrial Use
- Laser Power up to 6kW
- Infeed up to 12m length
- Outfeed up to 6m length
- Tube sizes up to 350mm Dia.

A COMPACT AND ECONOMICAL FIBER LASER FOR HIGH PRODUCTIVITY



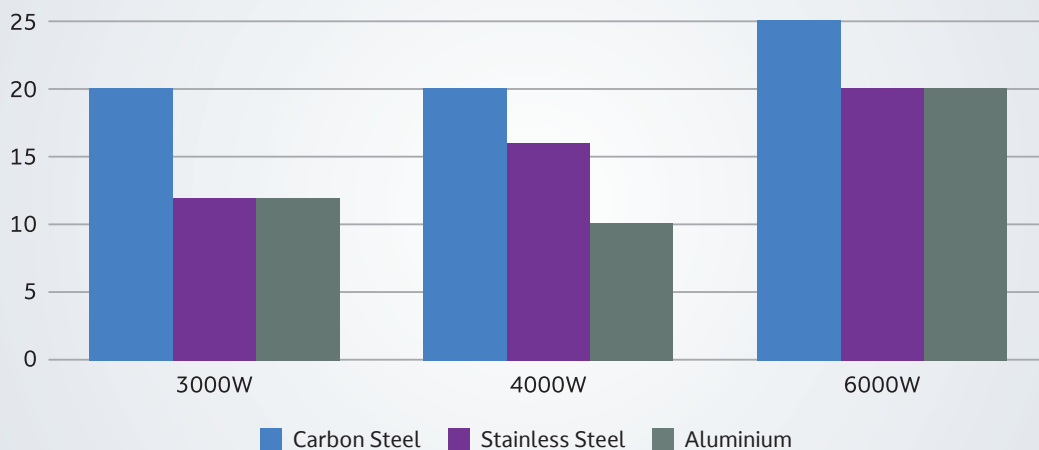


PENTA LASER UK LTD

TECHNICAL DATA

| | |
|--|-------------------------------------|
| Available Working Area | 6000 ~ 12000 mm |
| Laser power | 3KW ~ 6KW |
| Laser source | IPG or Maxphotonics Fiber |
| Wavelength | 1070 nm |
| Cutting Head | Raytool or Precitec |
| CNC Control System | Z32 CNC Smart Manager (EL.EN Italy) |
| Cutting gas | Oxygen, Nitrogen, Compressed Air |
| Maximum speed of axis rotation | ~100 rpm |
| Maximum speed of linear axis | ~90 m/min |
| Pipe diameter range | Ø 20-350mm 20x20-350x350mm |
| Maximum processing capacity | ~100kg/m |
| Total power consumption (At full load) | 55A~59A / 22kW~23kW |
| Electrical power supply | 400V-3pH-50Hz |
| Protection Class | IP54 |

Maximum material thickness (mm)



Call Penta UK now to discover more and
arrange your personal demonstration of the
Penta Laser range

01788 226 422