



**DynamxMFG®**

Powered by TotalControlPro®

## Smart Manufacturing Platform

Adopt Smart Manufacturing Operations Management in your production facilities with DynamxMFG®.

The platform transforms Manufacturing Execution, Inventory, Sales management, Real-time production control, Shop-floor Data capture and Planning.

TotalControlPro® the experts in process, brings you DynamxMFG® the flexible solution that connects plans to action, increasing productivity and reducing downtime.

Helping you to #Make things Better, #On time, and #Profitably.



# Total Control to DynamxMFG - the SME Smart Manufacturing ERP

Speaking with Manufacturers that are both customers and collaborators, they have stated that the key to success in manufacturing is making things of the right quality, delivering when they say they will deliver and doing this profitably, whilst ensuring employee engagement and overall plant efficiency.

DynamxMFG® is the consequence of working with over 40 Manufacturers on their needs and pain points.

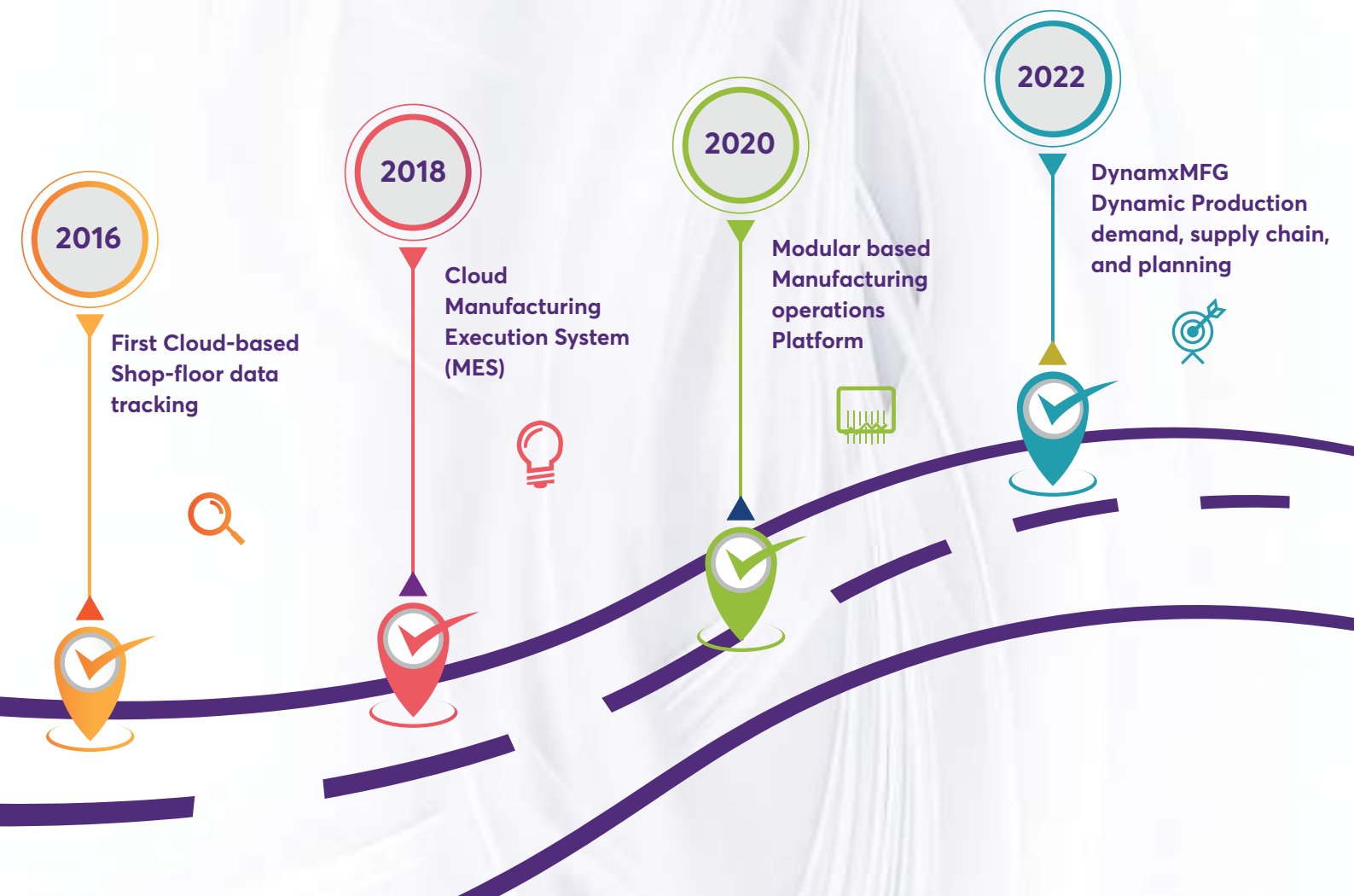
We understand that often the process management and data collection systems in use are operated separately and disconnected. Whether using an ERP or Excel, people spend too much time finding out what's happening in order to take action, and often that action takes too long or is too late. DynamxMFG® is a next-generation manufacturing platform that combines machine learning, and cognitive automation to provide you with the infrastructure you need to compete with the best in a rapidly evolving manufacturing world.

One client said "Clearly your system has been built by people who understand the pain points in manufacturing, and you've provided some real solutions to painful problems"  
Production Director, SME Fabricator.

This user subscription-based platform is designed to meet the needs of demand-based manufacturing, the need to collect specific data on the shop floor in real-time, append the production process with this data and be agile to deal with supply chain fluidity and energy management. This is achieved via specific operation areas that cover smart work planning, shop floor data capture, manufacturing execution, process control, inventory management and real-time performance reporting.

The right resources, at the right place, at the right time, doing the right task, against the right job.

## Our Innovation Journey



# Platform Features and Benefits



## Manufacturing Execution System (MES)

Track people product and process to connect, analyse, adapt and evolve the manufacturing process.

Our tracking and execution system, takes all the demand and production data and makes it available instantly to the production and shop floor teams. Enabling clearer instructions and improved production control.

- ✓ Real-time visibility of planned vs actual production times per operation and resources in use, stopped or idle.
- ✓ Dynamic Routing, allowing rapid deployment of works orders, to operations and work centres, to give full real time visibility of what's in work and where.
- ✓ People product and process, control, Dynamic fields simply deployed per operation, allow on the spot QA checks, and audit data collection.
- ✓ Utilise any web-enabled tablet or device for immediate data capture and process tracking.



**10,000**  
HOURS OF LOST  
PRODUCTION  
TIME  
RECOVERED

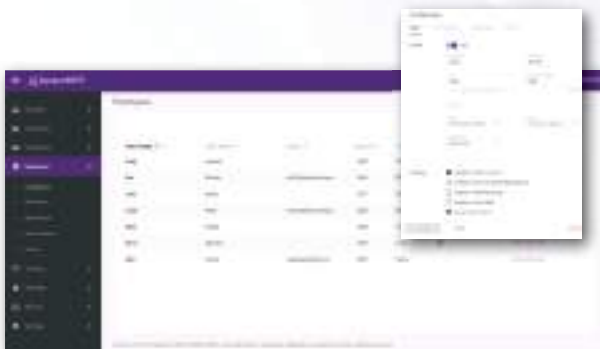
**20%**  
INCREASE IN  
PRODUCTIVITY

**10%**  
DECREASE  
IN  
DOWNTIME



## Digital Plant – Resource Management

Create a full digital representation of your plant, enabling management of people, machines, tools, shifts and work centres.



- ✓ Create the rules of engagement, which team with the necessary skills are available and what machines can be loaded for production scheduling and real-time allocation of work, to enable better utilisation.
- ✓ Capture detailed understanding of you plant operations and capacity enabling rapid and effective process improvements.
- ✓ Manage exceptions to availability, holidays, sickness, and machine downtime.



## Customer Management

Manage custom orders with detailed designs and specifications, track non-conformance and change requests and view the entire audit trail at the touch of a button.

- ✓ Build and manage quotes, orders, and works orders with real time access to costs margins and specifications.
- ✓ Synchronise with Inventory and material availability for better management of design and manufacturing Bill of Materials (BOM).
- ✓ Manage customer order specific details, data and specifications, variations, new requests, and order status.



## Inventory Management

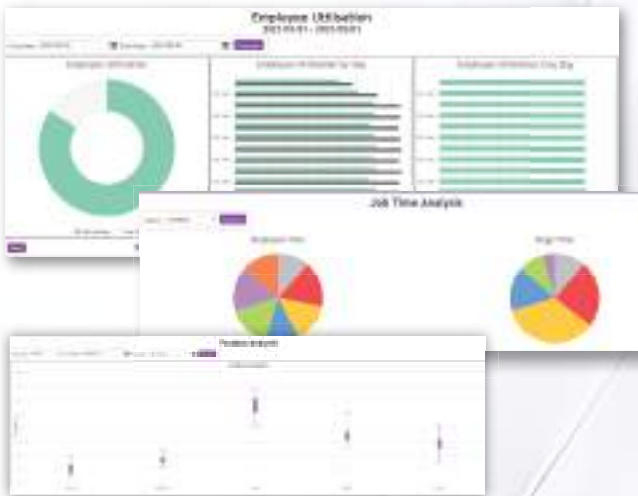
Real-time inventory tracking helps you improve inventory management and ensures that you have optimal stock available to fulfill orders. Improving accuracy, reducing costs, save time, improve Business Planning and improve Customer Service.

- ✓ Accurate stock availability, reorder levels and economic build quantities.
- ✓ Integrate with shop floor booking in and dispatch functionality for end-to-end order management, confidently track locations, costs & material details.
- ✓ Advanced features include serialisation of parts, picking vs auto consumption of materials, real-time management of average/ cost pricing and WIP.





## Manufacturing Intelligence



Produce powerful manufacturing intelligence reports to understand labour and machine productivity, production efficiency and all-round performance and utilisation.

- ✓ Access immediate, real-time standard reports built by manufacturers for manufacturers.
- ✓ Unlock visibility of your unique processes via customised reports delivering data-driven insights.
- ✓ See what's working and identify the gaps to improve productivity, overall resource efficiency.



**25%**  
REDUCTION  
IN LEAD TIMES  
RECOVERED

**100%**  
PAPERLESS

**FULL**  
VISIBILITY  
OF THE  
PROCESS



## Planning & Scheduling

DynamxMFG® Planning developed with Safran Landing Systems and Made Smarter.



Make complex scheduling decisions based on, real-time datasets, move from **expediting to a 100% agile planning and scheduling process.**

- ✓ Reduce downtime and optimise assets, production capacity, and utilisation to drive productivity improvements.
- ✓ Improve **on-time-delivery**, significantly reduce **inventory costs**, transform **utilisation** KPIs such as **OLE, OEE.**
- ✓ Make significant inroads to the companies NetZero targets through optimum use of resources and managing out waste.



## Business Integration

Take what works from your current business systems and connect the data across your organisation. Link Accounts, CRM, CAD, Excel, Web Order, ERP and many more.

- ✓ Transfer your current business data into your operations platform for rapid digital adoption and transformation.
- ✓ Add, connect and automate 3rd-party applications to suit changing organisational needs.
- ✓ Combine data from multiple sources to view enterprise-level analysis of your business and its processes.



**10%**  
DECREASE IN  
DOWNTIME

**IMPROVED  
PROCESSES**

**40%**  
PRODUCTION  
IMPROVEMENT



## Shop Floor Data Capture

Two-way communication from shop floor to top floor

Select from a range of purpose designed interfaces that best suit your working environment and run on any web enabled device.

Flexible shop floor applications to manage;

- ✓ Book goods in.
- ✓ Pick and track stock locations.
- ✓ Create batches.
- ✓ Capture data at each production phase.
- ✓ Touchscreen and/or QR code tracking.
- ✓ Capture QA data and part specific measurements.
- ✓ View and manage work allocated to work centres and/or specific resources.
- ✓ Advance Palleting and Dispatch.





- ✓ View and manage work allocated to work centres and/ or specific resources.
- ✓ Present planned work to production floor.
- ✓ Create Batches, Book Inventory in and Goods out.
- ✓ Capture data at each production stage.



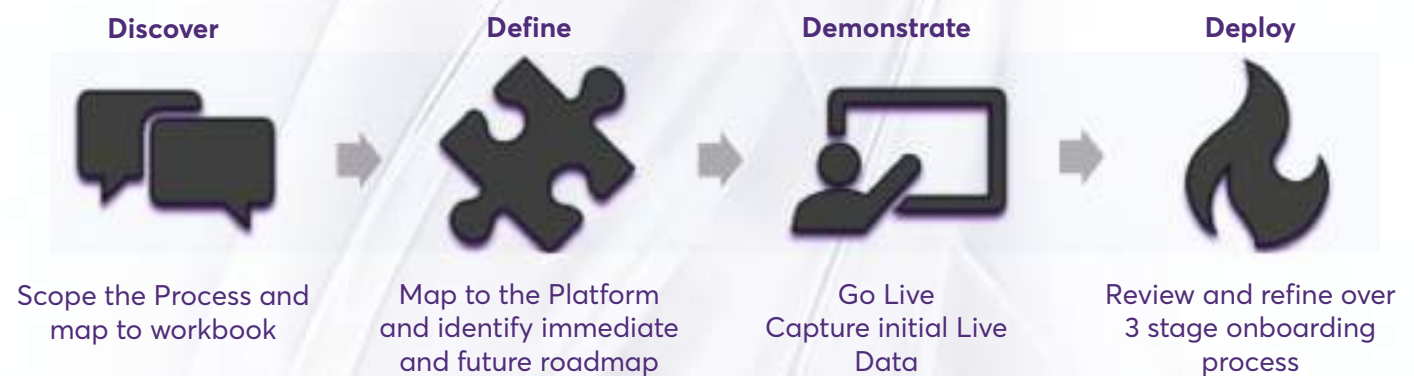
## ▶▶▶ GETTING STARTED

The deployment of new technology can be disruptive, we understand that, The options on the market are to:

1. Completely self-manage,
2. Hire a consulting and deployment team to manage,
3. A hybrid of the two, which is what we believe works best.

At Total Control Pro, we are committed to you having total control of your system as quickly as possible, however, we understand there's a process to go through with you to get there.

Think of it as a relay, where we start, run with you then hand the baton over using a 4 step Approach:



## ▶▶▶ CLIENT TESTIMONIALS

"TotalControlPro® enables us to review, optimise and reward performance and compare actual costs against predicted costs for each job."

**D. Laverick, Production Manager, Mowden Controls**

"Kal Tire's integration of the barcode system has allowed for more traceability with capturing more data on timings. The versatile and wholly adaptable system has allowed them to look online to find data on tyre production currently occurring in the field."

**Caylan Bacon, Production Manager - Kal Tire**

"40% improvement in productivity - straight out of the box. Now we are working on the next level"

**Marcus Trofimov, Managing Director, Silverstone Composites**

"We had an inhouse system, but it left no visibility of the shop floor, now we can see in the moment where each part of each order is throughout production and bring together ready for dispatch."

**Andrew Mountford, Manufacturing Operations, Venesta**

"We are now able to stream real-time information so both the customer and our operators can monitor jobs in real-time, detecting problems as they may unfold."

**Fabricator**



# ▷▷▷ WHAT YOU CAN EXPECT

## The Business Need

The production of a wide range of complex precision-engineered parts at different stages made monitoring and tracking increasingly difficult. The original system Silverstone Composites had in place could not keep up and restricted the company from developing and processing increasing orders. Previously engineers were working from paper-based schematics and drawings. They needed a way to completely digitise their process.

With their current systems, Silverstone Composites weren't able to pinpoint the stoppages in production due to miscommunication, delays in manufacturing and lack of stock availability. TotalControlPro® quickly noticed this was an issue. We highlighted to the Silverstone Composites team that being able to visualise these issues would enable all team members to view real-time red flags around current orders and react to each situation accordingly.

## The Solution Provided

By facilitating the core functionality of the TotalControlPro® software, Silverstone Composites are able to digitise their complete process. The software provides full visibility of the order flow, traceability of resources, job time tracking, monitors batching features and identifies stoppages and breakout issues. The software enables real-time communication both within and between teams. Those in laminating now know the fundamentals being worked on at the cutting station and therefore when to commence the laminating job stage.



## The Business Need

Our basic MRP system was limiting our manufacturing capacity, we needed a system which would enable the automation of processes, remove duplication and paperwork, increase efficiency and obtain accurate data.

We had the following business challenges;

- **Weak Data Management** - manually track workflow & job monitoring
- **Manual Paper-based systems** with multiple siloed areas
- **High maintenance requirements** for production management
- **Human error** when preparing production packs
- **Lack of connectivity**, delay in responding to issues

## The Solution Provided

We have recently implemented the DynamxMFG® shop floor data collection system, "Moving to a process managed by a shop floor data capture system will eliminate the need for a paper-based system, enable single entry of data, reduce administrative load on production management and improve quality control." Aerospace Fabrication Company.

# ON PREMISE OR CLOUD-BASED

## WHAT'S BEST FOR YOU?



Technology will age quickly.  
Can be expensive upfront  
and costs justified long term.



Technology updated frequently.  
Low or no set-up fees and cost is  
spread over time through subscription.



On-premise systems are the  
responsibility of your own IT team  
independently.



Scale up and down quickly and cost  
effectively based on the changing  
needs of your business.



Does not rely on an internet  
connection but may struggle  
connecting info from one part of  
facility to another.



Rapid implementation allows  
functionality to be setup and deployed  
quickly while avoiding disruption to  
your operations.



You will be solely responsible for  
managing your own data security.



Your data is secured by industry  
leaders and can be accessed remotely  
for flexible data sharing. Perfect for  
teams working from home.

# ▷▷▷ JOIN OUR PARTNER PROGRAMME

Make Industry 4.0 a reality for your clients with our Performance Partner Programme. Combine your expertise with DynamxMFG® industry-leading software to help transform manufacturing.

Improving productivity and efficiency is at the core of all we do, digitising process management to put Total Control back into the hands of the Manufacturers.

Created by manufacturers for manufacturers, TotalControlPro® will give you the confidence, resources and benefits to enable you to build a business that is:

- **Ready to go** - Be up and running in no time with our cloud-based system that is easy to implement and provides return on investment within weeks.
- **Flexible** - Develop your business portfolio independently to suit your needs, with confidence that you're delivering an innovative, affordable and transformational solution for your organisation.
- **Rewarding** - Maximise your potential by opening doors to new opportunities, clients and projects.

---

**"DynamxMFG® can help peel back the layers of inefficiency in all areas – so it's a tool that can be moulded to the needs of a business as it evolves"**

*Chris Ward, Managing Consultant, PDCA Consulting*

**"As technology providers, it is our belief that we need to make and share tech that is fit for spec, and often the right solution for the client is a combination of digital solutions, working with our partners allows us to do this"**

*Dolores Sanders, Director, Total Control Pro*

**"We bring the IOT, they bring the people product and process tracking."**

*Niamh Allen Sales & Marketing Director, IoT Horizon*

**"Smart Manufacture is looking forward to continuing to develop the partnership with Total Control Pro to harness the combined experience and capabilities to help more manufacturers across the UK to drive improved efficiencies and productivity through digitising their manufacturing processes."**

*Sara Duff, Director, Smart Manufacture*

---

## ▷▷▷ KEY RESULTS



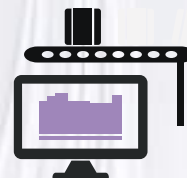
**Our industry-leading software puts you in control with:**



Live real-time data collection and feedback.



Right job, right resource in the right place at the right time.



Comprehensive manufacturing intelligence - for smarter decisions.



# DynamxMFG<sup>®</sup>

## From TotalControlPro<sup>®</sup>

Unlock smart Manufacturing Operations Management in your production facilities with the DynamxMFG<sup>®</sup> cloud platform of manufacturing applications.

- ✓ The right resources,
- ✓ At the right place,
- ✓ At the right time,
- ✓ Doing the right task,
- ✓ Against the right job.

## GET IN TOUCH

+44(0) 345 680 4045  
sales@totalcontrolpro.com  
www.totalcontrolpro.com  
The Vulcan Works  
34-38 Guildhall Road,  
Northampton, NN1 1EW



We are proud to be



SMART  
MANUFACTURING  
DATA HUB