



The **industrial vision** solution  
for **assembly** applications

## Quality optimization

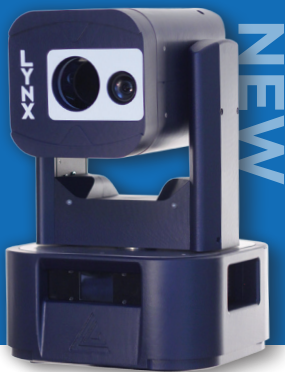
Improve your production **quality** with **LYNX**, vision control system, and **reduce your non-conformity costs**.

- Automatic detection
- Proven algorithm
- Production guidance via Augmented Reality
- Help with non-conformities correction
- Automatic report
- Traceability
- Connectivity MES

## Small and big volumes

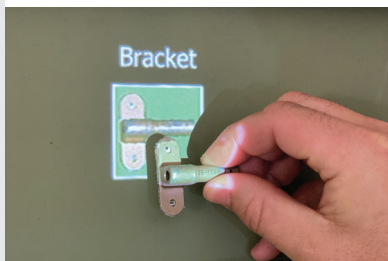
With more than 10 meters of range, a 360° field of view and the system parallelization capabilities, LYNX can easily and efficiently adapt to your installation.

Don't let the size of your production limit your control capacities.



## Fast inspection

- Repeatable
- More than **1500 controls** per hour
- **Assembly assistance**  
- assembly instruction projection



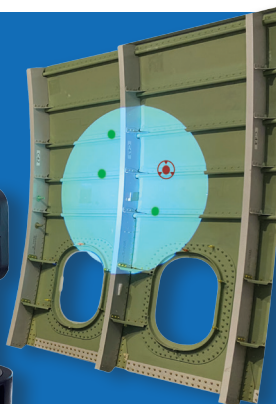
Discover how our system  
can help you to face all  
your challenges.

## Plug & play

LYNX is the ideal solution for an ergonomic use and a quick integration.

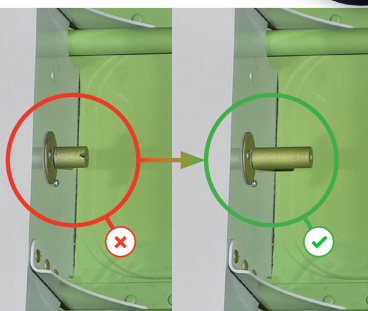
Thanks to its intuitive software, enjoy the advanced features immediately

**Obtain professional results with a unique simplicity of use and installation.**



## Reliability

LYNX offers **optimal reliability** through automatic controls, reduced human factor and hardware robustness. The software solution also offers a high flexibility, traceability and MES connectivity.



**Trust LYNX for a high quality production.**

**Already more than 200 LYNX in our customer's factories and several millions of controls performed.**

**They trust us...**

Airbus Atlantic • Airbus Defence & Space • AMRC • Cummins • Embraer • Figeac Aero • GKN • KEP Technologies • Martin Baker • MDA • MHI Group • OneWeb • Premium Aerotec • Rolls-Royce • Safran • Spirit Aerosystems



## CONTACTS

[sales@g2metric.com](mailto:sales@g2metric.com)

☎ +33 5 34 27 62 90

© 2023 G2METRIC  
Impression: AD'HOC COMMUNICATIONS